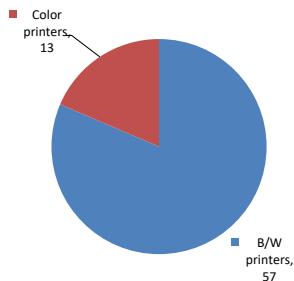


Please find enclosed a snap shot of your school's printer environment. The printer breakdown and data encompasses only the printers we can see on your network. You may have additional printers that are locally connected (e.g. USB attached), but those are not included in this breakdown.

Chart 1 – School Printer Breakdown

This provides your school's enrollment, along with the number of printers, including the distribution between B/W and color printers.

Color/Mono Device Breakdown



P. S. 62 - Chester Park School

Enrollment	930
B/W printers	57
Color printers	13
Total printers	70

From the list provided on page 3 are all of your printers represented? If not, how many are missing Providing Lexmark the asset data that is missing will allow us to give you a more accurate picture of your printer environment.

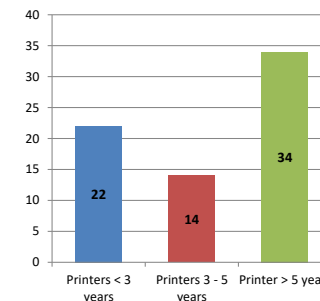
Do you know how many printers you have in your main office, compared to the number of people who sit in the main office?

Reducing the number of devices and using the most efficient models in the right locations can help your school save money.

Chart 2 – Printer Age Statistics

Here we show the average age of your printers and show the distribution among 3 age categories; under 3 years old, 3-5 years old and over 5 years old.

Printer Age Statistics



Printer Age Statistics

Average Age (years)	6
Printers < 3 years	22
Printers 3 - 5 years	14
Printer > 5 years	34

The age of your printer fleet plays a large role in your annual printer maintenance and toner cost. The DOE only supports printers 6 years and younger.

Once the warranty expires and the age of your device exceeds 6 years, maintenance and repairs become very costly.

New printers have higher toner yields than older printers, resulting in lower cost per page which saves money.

Newer printers are Energy Star compliant and have advanced eco settings which help reduce energy usage and saves money.

Glossary

B/W - Black and White Printing Only

Color - Color or Black and White Printing

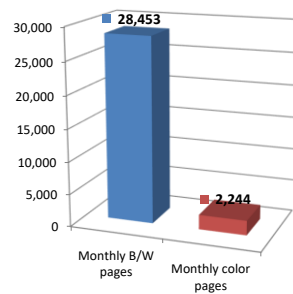
Duplex - Printing on both sides of the paper.

Simplex - Single Sided Printing

Chart 3 – Volume of Pages Printed

This provides your printed page volumes for the previous month for both B/W and color print jobs. In addition, a utilization percentage is calculated by comparing your print volume for each printer to the maximum monthly volume capacity for that printer model.

Color/Mono Pages Printed



Volume of pages printed

Monthly B/W pages	28,453
Monthly color pages	2,244
Total monthly pages	30,697
Color page %	7%
Utilization %	4%

[Do you know if all of your printers are being used and how much?](#)

Knowing where volumes are created helps identify areas for consolidation and helps you select the most efficient printers for replacement.

[Are you printing a large amount of color volume?](#)

Controlling color volume, which typically costs more than black and white, can help your school save money.

Chart 4 – Duplex Breakdown

This section shows the percentage of duplexed (double-sided) pages printed along with your duplex opportunity. Duplex opportunity is the total number of pages that could be printed duplex and does not include single page documents. Keep in mind, only the newer printers report duplex statistics. The duplex opportunity shows the prior month's print volume, from the printers with duplex statistics, that could have been duplexed.

Duplex Vs. Simplex



Duplex breakdown

Duplex opportunity	Info Not Available
Duplex	0%

[Did you know that your printers are able to print on both back and front of the page?](#)

Increasing your school's use of double sided printing helps reduce your environmental impact and will help your school save money.

[The average duplex rate for the NYC DOE is 14%](#)

A modest improvement in duplex of 10% would reduce the carbon footprint by over 435,000 pounds of CO₂ per year, and save the DOE over \$78,000 in paper costs annually.

[Lexmark printers 6 years and younger all have duplex capability. The following duplex initiatives can reduce paper consumption and save money:](#)

Setting duplex as your default setting on your printer

Educating end users about the benefit of duplex printing.

[For more information on how the DOE is focused on Sustainability check:](#)

<http://schools.nyc.gov/community/facilities/sustainability/about/>

Actions you can take to Save your School Money

- Use highest yield toner whenever possible to lower the cost per page.
- Consider replacing printers over 6 years old to optimize eco-friendly printer environment.
- Duplex multiple page documents when possible to reduce paper usage.

Printer details

Model	Serial Number	Age in Years	Utilization	ATS Printer	Avg Mono Pages	Avg Color Pages	Avg Monthly Volume
C544n	945B8PG	7					

CS510 Low Volt	5027469464995	6					
CS510de	5027089464XVY	5	1%		12	44	56
CS510de	5027459450BMD	7	6%		165	251	416
CS510de	5027089464XW1	5	4%	Yes	82	228	310
CS510DE	502720946DT48	4					
CX510DE	752743946G2W3	3	4%		18	257	275
CX622ADE	7529838140ZGV	1	5%		92	369	461
CX725DHE	7528747011Y94	2	7%		253	1095	1348
E250dn	72B65VM	14					
E250dn	72B65W5	14					
E250dn	72B6644	14					
E250dn	72B66T3	14					
E250dn	72B66NZ	14					
E250dn	72B66RV	14					
E250dn	72B665K	14					
E250dn	72B668D	14					
E460dn	72HKZ3W	9					
E460dn	72HKZ4D	9	7%		700		700
E460dn	72HKZ4L	9	4%		406		406
MS510DN	45148PHH4P33D	2	11%		1546		1546
MS510DN	45147GHH428BX	2	20%		2858		2858
MS510DN	45147GHH428FY	2					
MS510DN	45148PHH4P2W8	2					
MS510dn	451456HH29XHV	4	16%		2275		2275
MS510dn	451420HH045RX	7					
MS510dn	451456HH29XHD	5					
MS510dn	451420HH045TD	7	4%		622		622
MS510DN	45148PHH4P34B	2					
MS510dn	451444HH1CCLF	6					
MS510dn	451420HH045R6	7	3%		377		377
MS510DN	45147GHH4289T	2	18%		2485		2485
MS510dn	451456HH29X74	4					
MS510DN	45146PHH32HVG	4	1%		153		153
MS510DN	45148PHH4P348	2	3%		433		433
MS510DN	45148PHH4P345	2	3%		461		461
MS510dn	451431HH09LWG	7	0%		20		20
MS510dn	451456HH29XH9	5	10%		1435		1435
MS510dn	451420HH045RN	7	11%		1576		1576
MS510dn	451431HH09LXP	7	17%		2410		2410
MS510dn	451456HH29XHM	5					
MS510dn	451456HH29XHB	5	11%		1489		1489
MS510DN	45148PHH4P32N	2					
MS510dn	451456HH29XGY	5					
MS510DN	45147GHH428CL	2	8%		1056		1056
MS510DN	45147GHH4C95D	2	4%		601		601
MS510dn	451456HH29XH8	5					
MS510dn	451431HH09LXC	7	15%		2166		2166
MS510dn	451445HH210YH	5	9%		1199		1199
MS510dn	451420HH045TC	7					
MS510DN	45146PHH32HVW	4					
MS510DN	45146PHH32HVP	4					
MS510DN	45147GHH4289G	2					
MS510DN	45148PHH4P31P	2					
MS510DN	45148PHH4P33B	2	1%		73		73
MS510DN	45148PHH4P33W	2	4%		605		605
MS510DN	45148PHH4P33X	2					
MS621DN	460091330RBB1	1					
MS621DN	460091330RBB2	1					
MS621DN	460091330RB05	1					
MS810DE	40637D6603B5M	2	6%	Yes	1230		1230
MX711DHE	74636C6601WNT	3	1%	Yes	146		146
SVCE322	990D3CZ	17					
SVCE322	990D3CT	17					
SVCE322	9904DRV	18					

<< More data continued on Next Page >>

27Q062 - Jan 2020 - Page 3

Printer Details - Page 2

Model	Serial Number	Age in Years	Utilization	ATS Printer	Avg Mono Pages	Avg Color Pages	Avg Monthly Volume
SVCE322	9904DZX	18					
T640n	7903X14	14	8%		1092		1092
T650n	793T189	9		Yes			
T650n	79493NC	9	2%	Yes	417		417

