

Lexmark Managed Print Services Monthly Report: Jan 2020
27Q232 - P.S. 232 Lindenwood, 153-23 83 Street, Queens, NY 11414-1801

Please find enclosed a snap shot of your school's printer environment. The printer breakdown and data encompasses only the printers we can see on your network. You may have additional printers that are locally connected (e.g. USB attached), but those are not included in this breakdown.

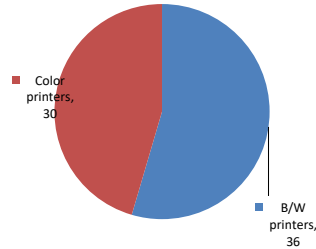
Chart 1 – School Printer Breakdown

This provides your school's enrollment, along with the number of printers, including the distribution between B/W and color printers.

P.S. 232 Lindenwood

Enrollment	944
B/W printers	36
Color printers	30
Total printers	66

Color/Mono Device Breakdown



From the list provided on page 3 are all of your printers represented? If not, how many are missing
Providing Lexmark the asset data that is missing will allow us to give you a more accurate picture of your printer environment.

Do you know how many printers you have in your main office, compared to the number of people who sit in the main office?
Reducing the number of devices and using the most efficient models in the right locations can help your school save money.

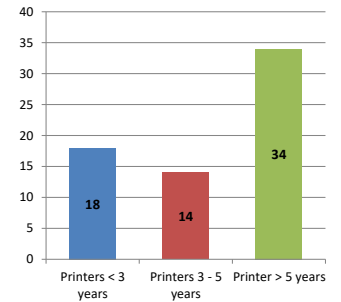
Chart 2 – Printer Age Statistics

Here we show the average age of your printers and show the distribution among 3 age categories; under 3 years old, 3-5 years old and over 5 years old.

Printer Age Statistics

Average Age (years)	5
Printers < 3 years	18
Printers 3 - 5 years	14
Printer > 5 years	34

Printer Age Statistics



The age of your printer fleet plays a large role in your annual printer maintenance and toner cost. The DOE only supports printers 6 years and younger.

Once the warranty expires and the age of your device exceeds 6 years, maintenance and repairs become very costly.

New printers have higher toner yields than older printers, resulting in lower cost per page which saves money.

Newer printers are Energy Star compliant and have advanced eco settings which help reduce energy usage and saves money.

Glossary

B/W - Black and White Printing Only

Color - Color or Black and White Printing

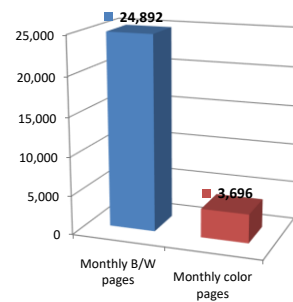
Duplex - Printing on both sides of the paper.

Simplex - Single Sided Printing

Chart 3 – Volume of Pages Printed

This provides your printed page volumes for the previous month for both B/W and color print jobs. In addition, a utilization percentage is calculated by comparing your print volume for each printer to the maximum monthly volume capacity for that printer model.

Color/Mono Pages Printed



Volume of pages printed

Monthly B/W pages	24,892
Monthly color pages	3,696
Total monthly pages	28,588
Color page %	13%
Utilization %	4%

[Do you know if all of your printers are being used and how much?](#)

Knowing where volumes are created helps identify areas for consolidation and helps you select the most efficient printers for replacement.

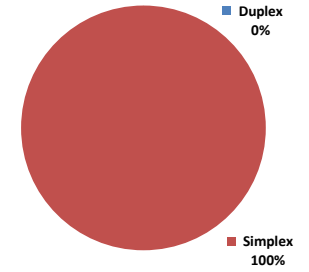
[Are you printing a large amount of color volume?](#)

Controlling color volume, which typically costs more than black and white, can help your school save money.

Chart 4 – Duplex Breakdown

This section shows the percentage of duplexed (double-sided) pages printed along with your duplex opportunity. Duplex opportunity is the total number of pages that could be printed duplex and does not include single page documents. Keep in mind, only the newer printers report duplex statistics. The duplex opportunity shows the prior month's print volume, from the printers with duplex statistics, that could have been duplexed.

Duplex Vs. Simplex



Duplex breakdown

Duplex opportunity	Info Not Available
Duplex	0%

[Did you know that your printers are able to print on both back and front of the page?](#)

Increasing your school's use of double sided printing helps reduce your environmental impact and will help your school save money.

[The average duplex rate for the NYC DOE is 14%](#)

A modest improvement in duplex of 10% would reduce the carbon footprint by over 435,000 pounds of CO₂ per year, and save the DOE over \$78,000 in paper costs annually.

[Lexmark printers 6 years and younger all have duplex capability. The following duplex initiatives can reduce paper consumption and save money:](#)

Setting duplex as your default setting on your printer

Educating end users about the benefit of duplex printing.

[For more information on how the DOE is focused on Sustainability check:](#)

<http://schools.nyc.gov/community/facilities/sustainability/about/>

Actions you can take to Save your School Money

- Use highest yield toner whenever possible to lower the cost per page.
- Consider replacing printers over 6 years old to optimize eco-friendly printer environment.
- Duplex multiple page documents when possible to reduce paper usage.

Printer details

Model	Serial Number	Age in Years	Utilization	ATS Printer	Avg Mono Pages	Avg Color Pages	Avg Monthly Volume
C534n	9439BBH	11					

C544dn	94684HY	8				
C544dn	946CXYX	7				
C544dn	9468B20	8				
C544dn	9468B24	8	13%	124	264	388
C544dw	9463CGZ	9				
C544dw	9453GD8	9				
C544dw	9453RRV	9				
C544dw	9453RX5	9				
C544n	9468P65	8				
CS510de	5027089464XZ7	5	7%	320	138	458
CS510de	502724946BKWD	4	5%	93	271	364
CS510de	502719945292W	6				
CS510de	502742945433Z	6	15%	552	484	1036
CS510de	5027089461BT3	6				
CS510de	5027089461BRR	6				
CS510de	5027089461BV4	6	17%	471	693	1164
CS510DE	502725945MZ4W	2	15%	739	288	1027
CS510DE	502728945NC21	2	8%	339	251	590
CS510DE	502735945PC64	2	3%	95	143	238
CS510de	5027089461BKD	6	6%	45	391	436
CS510de	5027089464XZ8	5	11%	684	83	767
CS510de	5027449457RMB	5	8%	394	189	583
CS510DE	502706946HRD7	3	11%	300	501	801
CS510de	5027159465B76	5				
CS510DE	502704946HNVC	3				
CS510DE	502706946HRH6	3				
CS622DE	5029845040Y4X	1				
CS622DE	5029903041BNK	0				
CX510de	75273894500K0	6				
MS510dn	451444HH1RTZH	5				
MS510dn	451444HH1F28N	5				
MS510DN	45146PHH371G9	3				
MS510dn	451444HH1F2HB	5	2%	340		340
MS510DN	45146PHH371GL	3	12%	1741		1741
MS510DN	45146PHH3DGP6	3	1%	194		194
MS510DN	45146PHH3DGN1	3	2%	273		273
MS510dn	451457HH2H0M4	4	19%	2724		2724
MS510DN	45146PHH3DGNH	3	11%	1529		1529
MS510dn	451444HH1F2HV	5	3%	367		367
MS510dn	45145PHH2K71H	4	1%	156		156
MS510DN	45146PHH3DGPC	3	2%	245		245
MS510DN	45146PHH3DGN0	3	8%	1070		1070
MS510dn	45145PHH2K6KR	4				
MS510dn	451444HH1F2HR	5				
MS510dn	451444HH1F2GT	5				
MS510dn	451445HH21CMG	5	1%	143		143
MS510dn	451444HH1F2HT	5				
MS510DN	45146PHH371GC	3	10%	1370		1370
MS510DN	45146PHH3DGP4	3				
MS510DN	45147GHH3RD95	3	6%	832		832
MS510DN	45147GHH3RD96	3	11%	1562		1562
MS510DN	45147GHH4H1Y	2				
MS510DN	45147GHH4K6F3	2				
MS621DN	4600820004MPD	1	12%	2395		2395
MS621DN	4600814002613	1				
MS621DN	460083700D95H	1				
MS621DN	46009333107KP	0				
MS621DN	46009333107NC	0				
MS621DN	4600949317C7B	0				
MS810de	40634C6600M3P	5	2%	421		421
MS810de	4063369908VNG	7				
MX710de	7463479905Y6B	4	4%	2693	Yes	2693
T650n	7959V60	8	12%	2404		2404
T650n	7950FXL	8				

<< More data continued on Next Page >>

27Q232 - Jan 2020 - Page 3

Printer Details - Page 2

Model	Serial Number	Age in Years	Utilization	ATS Printer	Avg Mono Pages	Avg Color Pages	Avg Monthly Volume
T650n	794VB38	8	1%	Yes	277		277
0	0	0					
0	0	0					
0	0	0					

