

Please find enclosed a snap shot of your school's printer environment. The printer breakdown and data encompasses only the printers we can see on your network. You may have additional printers that are locally connected (e.g. USB attached), but those are not included in this breakdown.

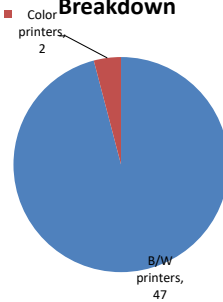
Chart 1 – School Printer Breakdown

This provides your school's enrollment, along with the number of printers, including the distribution between B/W and color printers.

Frederick Douglass Academy Vi High School

Enrollment	334
B/W printers	47
Color printers	2
Total printers	49

Color/Mono Device Breakdown



From the list provided on page 3 are all of your printers represented? If not, how many are missing Providing Lexmark the asset data that is missing will allow us to give you a more accurate picture of your printer environment.

Do you know how many printers you have in your main office, compared to the number of people who sit in the main office?

Reducing the number of devices and using the most efficient models in the right locations can help your school save money.

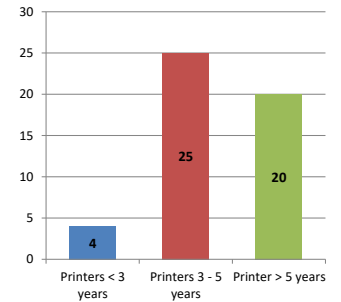
Chart 2 – Printer Age Statistics

Here we show the average age of your printers and show the distribution among 3 age categories; under 3 years old, 3-5 years old and over 5 years old.

Printer Age Statistics

Average Age (years)	6
Printers < 3 years	4
Printers 3 - 5 years	25
Printer > 5 years	20

Printer Age Statistics



The age of your printer fleet plays a large role in your annual printer maintenance and toner cost. The DOE only supports printers 6 years and younger.

Once the warranty expires and the age of your device exceeds 6 years, maintenance and repairs become very costly.

New printers have higher toner yields than older printers, resulting in lower cost per page which saves money.

Newer printers are Energy Star compliant and have advanced eco settings which help reduce energy usage and saves money.

Glossary

B/W - Black and White Printing Only

Color - Color or Black and White Printing

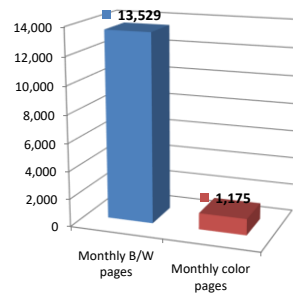
Duplex - Printing on both sides of the paper.

Simplex - Single Sided Printing

Chart 3 – Volume of Pages Printed

This provides your printed page volumes for the previous month for both B/W and color print jobs. In addition, a utilization percentage is calculated by comparing your print volume for each printer to the maximum monthly volume capacity for that printer model.

Color/Mono Pages Printed



Volume of pages printed

Monthly B/W pages	13,529
Monthly color pages	1,175
Total monthly pages	14,704
Color page %	8%
Utilization %	3%

[Do you know if all of your printers are being used and how much?](#)

Knowing where volumes are created helps identify areas for consolidation and helps you select the most efficient printers for replacement.

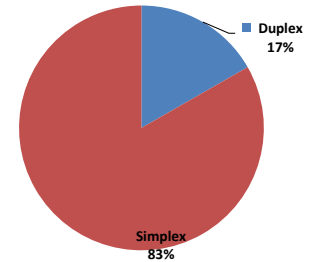
[Are you printing a large amount of color volume?](#)

Controlling color volume, which typically costs more than black and white, can help your school save money.

Chart 4 – Duplex Breakdown

This section shows the percentage of duplexed (double-sided) pages printed along with your duplex opportunity. Duplex opportunity is the total number of pages that could be printed duplex and does not include single page documents. Keep in mind, only the newer printers report duplex statistics. The duplex opportunity shows the prior month's print volume, from the printers with duplex statistics, that could have been duplexed.

Duplex Vs. Simplex



Duplex breakdown

Duplex opportunity	624
Duplex	17%

[Did you know that your printers are able to print on both back and front of the page?](#)

Increasing your school's use of double sided printing helps reduce your environmental impact and will help your school save money.

[The average duplex rate for the NYC DOE is 14%](#)

A modest improvement in duplex of 10% would reduce the carbon footprint by over 435,000 pounds of CO₂ per year, and save the DOE over \$78,000 in paper costs annually.

[Lexmark printers 6 years and younger all have duplex capability. The following duplex initiatives can reduce paper consumption and save money:](#)

Setting duplex as your default setting on your printer

Educating end users about the benefit of duplex printing.

[For more information on how the DOE is focused on Sustainability check:](#)

<http://schools.nyc.gov/community/facilities/sustainability/about/>

Actions you can take to Save your School Money

- Use highest yield toner whenever possible to lower the cost per page.
- Consider replacing printers over 6 years old to optimize eco-friendly printer environment.
- Duplex multiple page documents when possible to reduce paper usage.

Printer details

Model	Serial Number	Age in Years	Utilization	ATS Printer	Avg Mono Pages	Avg Color Pages	Avg Monthly Volume
CX510de	7527509466YY5	5	17%	Yes	346	831	1177

CX725DHE	7528623010B8L	3	2%		128	344	472
E352dn	622NCY0	12	5%		277		277
E352dn	622NCGD	12					
E352dn	622NCZ7	12					
E352dn	622NCXF	12	21%		1251		1251
E352dn	622NCW5	12					
E352dn	622NCKG	12					
E352dn	622NCWK	12					
E352dn	622NCTT	12					
MS510dn	451432HH0RDXZ	6					
MS510dn	451432HH0RDXP	6					
MS810de	40635C6600661	5					
MS810de	4063369907G5T	6	3%	Yes	558		558
MS810de	406347990KN66	6	18%	Yes	3567		3567
MX410DE	70156PLM16ZCR	3	3%		349		349
MX410DE	70156PLM16ZCP	3					
MX410DE	70156PLM16Z55	3					
MX410DE	70156PLM16Z9R	3	9%		924		924
MX410DE	70156PLM16Z5Y	3					
MX410DE	70156PLM16Z4X	3	5%		519		519
MX410DE	70156PLM16Z5D	3	3%		326		326
MX410DE	70156PLM16Z4Z	3					
MX410DE	70156PLM16Z5C	3	2%		204		204
MX410DE	70156PLM16ZCD	3					
MX410DE	70156PLM16ZBM	3					
MX410de	701545LM0MZ7R	5	1%	Yes	64		64
MX410DE	70156PLM16Z4T	3	9%		938		938
MX410DE	70156PLM16Z5G	3					
MX410DE	70156PLM16Z51	3	0%		38		38
MX410DE	70156PLM16YW1	3					
MX410DE	70156PLM16Z56	3					
MX410DE	70156PLM16Z50	3					
MX410DE	70156PLM16ZCV	3					
MX410DE	70156PLM16Z52	3					
MX410DE	70156PLM16Z59	3	1%		90		90
MX410DE	70156PLM16Z5F	3					
MX421ADE	7017907308Y0W	1					
MX421ADE	7017907308Y1F	1					
MX421ADE	7017907308Y2B	1					
MX711DHE	74637D6602219	2	10%	Yes	2504		2504
T640n	792DGZ4	12					
T640n	791H2KD	13					
T640n	7922D9Z	12	2%	Yes	244		244
T640n	7922DC4	12		Yes			
T640n	7922DB3	12					
T640n	7922DB6	12	5%		695		695
T640n	791H1GL	13	4%	Yes	507		507
X646dte	791Y4F4	11		Yes			

<< End of Data >>

For more information regarding this snapshot, please contact your Lexmark team

Lexmark Team

CDW Team
 CDW Sales Department – 800-705-4239

Title	Name	E-Mail	Phone
Client Executive	Mindy Maher	mmaher@lexmark.com	212-880-2837
Site Operations	Mark Ennis	mennis@lexmark.com	908-210-3030
Systems Engineer	TBD	TBD	TBD

Title	Name	E-Mail	Phone
Sales Manager	John Skidmore	john.skidmore@cdwg.com	(866) 687-3187
Sales Operations	Jon Gray	jongray@cdw.com	(203) 851-7133
		NYCDOE@cdwg.com	