

Please find enclosed a snap shot of your school's printer environment. The printer breakdown and data encompasses only the printers we can see on your network. You may have additional printers that are locally connected (e.g. USB attached), but those are not included in this breakdown.

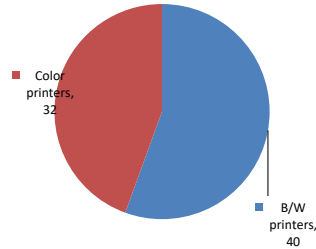
**Chart 1 – School Printer Breakdown**

This provides your school's enrollment, along with the number of printers, including the distribution between B/W and color printers.

**Robert H. Goddard High School Of Communication Art**

Enrollment	617
B/W printers	40
Color printers	32
Total printers	72

**Color/Mono Device Breakdown**



From the list provided on page 3 are all of your printers represented? If not, how many are missing Providing Lexmark the asset data that is missing will allow us to give you a more accurate picture of your printer environment.

Do you know how many printers you have in your main office, compared to the number of people who sit in the main office? Reducing the number of devices and using the most efficient models in the right locations can help your school save money.

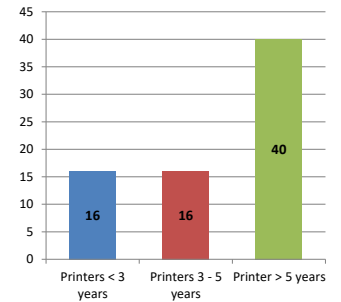
**Chart 2 – Printer Age Statistics**

Here we show the average age of your printers and show the distribution among 3 age categories; under 3 years old, 3-5 years old and over 5 years old.

**Printer Age Statistics**

Average Age (years)	6
Printers < 3 years	16
Printers 3 - 5 years	16
Printer > 5 years	40

**Printer Age Statistics**



The age of your printer fleet plays a large role in your annual printer maintenance and toner cost. The DOE only supports printers 6 years and younger.

Once the warranty expires and the age of your device exceeds 6 years, maintenance and repairs become very costly.

New printers have higher toner yields than older printers, resulting in lower cost per page which saves money.

Newer printers are Energy Star compliant and have advanced eco settings which help reduce energy usage and saves money.

**Glossary**

B/W - Black and White Printing Only

Color - Color or Black and White Printing

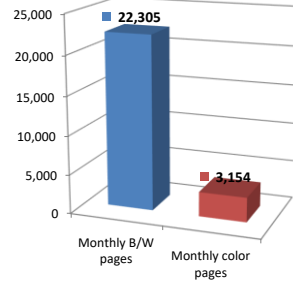
Duplex - Printing on both sides of the paper.

Simplex - Single Sided Printing

### Chart 3 – Volume of Pages Printed

This provides your printed page volumes for the previous month for both B/W and color print jobs. In addition, a utilization percentage is calculated by comparing your print volume for each printer to the maximum monthly volume capacity for that printer model.

Color/Mono Pages Printed



**Volume of pages printed**

Monthly B/W pages	22,305
Monthly color pages	3,154
Total monthly pages	25,459
Color page %	12%
Utilization %	3%

[Do you know if all of your printers are being used and how much?](#)

**Knowing where volumes are created helps identify areas for consolidation and helps you select the most efficient printers for replacement.**

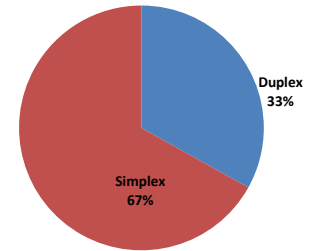
[Are you printing a large amount of color volume?](#)

**Controlling color volume, which typically costs more than black and white, can help your school save money.**

### Chart 4 – Duplex Breakdown

This section shows the percentage of duplexed (double-sided) pages printed along with your duplex opportunity. Duplex opportunity is the total number of pages that could be printed duplex and does not include single page documents. Keep in mind, only the newer printers report duplex statistics. The duplex opportunity shows the prior month's print volume, from the printers with duplex statistics, that could have been duplexed.

Duplex Vs. Simplex



**Duplex breakdown**

Duplex opportunity	117
Duplex	33%

[Did you know that your printers are able to print on both back and front of the page?](#)

**Increasing your school's use of double sided printing helps reduce your environmental impact and will help your school save money.**

[The average duplex rate for the NYC DOE is 14%](#)

**A modest improvement in duplex of 10% would reduce the carbon footprint by over 435,000 pounds of CO<sub>2</sub> per year, and save the DOE over \$78,000 in paper costs annually.**

[Lexmark printers 6 years and younger all have duplex capability. The following duplex initiatives can reduce paper consumption and save money:](#)

**Setting duplex as your default setting on your printer**

**Educating end users about the benefit of duplex printing.**

[For more information on how the DOE is focused on Sustainability check:](#)

<http://schools.nyc.gov/community/facilities/sustainability/about/>

## Actions you can take to Save your School Money

- Use highest yield toner whenever possible to lower the cost per page.
- Consider replacing printers over 6 years old to optimize eco-friendly printer environment.
- Duplex multiple page documents when possible to reduce paper usage.

**Printer details**

Model	Serial Number	Age in Years	Utilization	ATS Printer	Avg Mono Pages	Avg Color Pages	Avg Monthly Volume
C748DE	5026529425X27	4					

CS510DE	502710946D9GH	4					
CS510de	5027019458H17	5	6%		149	265	414
CS510DE	502711946DD7P	4					
CS510de	5027019458H0V	5	4%		42	203	245
CS510DE	502748945RYOR	2					
CS510de	5027019458H18	5	5%		162	161	323
CS510de	50270394513KX	7					
CS510DE	502702946TR7K	2					
CS510de	5027019458H1M	5	0%		2	17	19
CS510DE	502730946FG03	3	10%		202	486	688
CS510de	502716945B1VK	4	1%		39	21	60
CS510de	50270594617MH	7					
CS510de	502703946145C	7					
CS510DE	502711946DD77	4					
CS510DE	502711946DD6K	4					
CS510DE	502712946DDW0	4					
CS510DE	502710946D9GX	4	1%		21	32	53
CS510DE	502748945RX87	2					
CS510DE	502748945RX9R	2					
CS510DE	502748945RX9W	2					
CS510DE	502748945RY0P	2					
CS622DE	502981704040C	1	8%		254	546	800
CS725DE	5028703010Z69	3					
CX510de	7527509466YZ5	5	4%		133	135	268
CX510de	75274294638Y9	6	1%		1	44	45
CX510DE	75274694GRB30	2					
CX725DHE	75288090128YH	2	5%		187	885	1072
CX725DHE	75288040126TT	2	1%		24	238	262
CX725DHE	75288100129B1	2					
E360dn	72MDGV1	10					
E360dn	72MDH60	10	3%		187		187
E360dn	72MDGYC	10	3%		158		158
E360dn	72MDH5K	10					
E360dn	72MDH5G	10	4%		226		226
E360dn	72MDGXZ	10					
E360dn	72MDH5B	10					
E360dn	72MDH5C	10					
E460dn	72HK88W	9	0%		23		23
E460dn	72HK88P	9	2%		150		150
E460dn	72HP6WZ	8	3%		252		252
E460dn	72HP6X5	8	0%		38		38
E460dn	72HK7RC	9					
E460dn	72HP6X4	8	2%		172		172
E460dn	72HW2DF	7	3%		250		250
E460dn	72HK891	9	3%		282		282
E460dn	72HW2D3	7					
MS510dn	451444HH1G27K	6					
MS510DN	45148PHH4P2X1	2	4%		555		555
MS621DN	460084100FB5X	1	6%		1132		1132
MS810DE	40638D6600HD7	2	0%		2		2
MS810de	406347990K0XG	6					
MS810de	406336990DTT1	6	12%		2404		2404
MS810de	406336990DTT0	6		Yes			
MS810de	406336990DTR9	6	4%		838		838
MS810de	406336990DTPF	6		Yes			
MS810de	406336990DTRG	6					
MS810de	4063369904DYL	7	1%		243		243
MS810de	4063369904DP9	7	3%		695		695
MS810de	40635C6606MH1	4	7%	Yes	1452		1452
MS810de	4063369904DNY	7	0%		53		53
MS810de	406347990KN7T	6	14%	Yes	2790		2790
MS810de	406347990KN7M	6	3%	Yes	548		548
MS810de	406347990KN82	6	21%	Yes	4132		4132
MS810de	4063369904DY4	7					

<< More data continued on Next Page >>

27Q308 - Jan 2020 - Page 3

### Printer Details - Page 2

Model	Serial Number	Age in Years	Utilization	ATS Printer	Avg Mono Pages	Avg Color Pages	Avg Monthly Volume
MS810DE	40638D6600HDD	2	3%		668		668
MX711dhe	74635C6602WK6	4	12%	Yes	2884		2884
T650n	793VT2G	10	1%		179		179
T650n	793VRWM	10	4%	Yes	747		747

T650n	793VRM8	10	Yes			
X544n	94F8C7T	7				
X544n	94F8K38	7	5%	29	121	150
0	0	0				
0	0	0				
0	0	0				
0	0	0				
0	0	0				
0	0	0				
0	0	0				
0	0	0				
0	0	0				
0	0	0				
0	0	0				
0	0	0				
0	0	0				
0	0	0				
0	0	0				
0	0	0				
0	0	0				
0	0	0				
0	0	0				
0	0	0				
0	0	0				
0	0	0				
0	0	0				
0	0	0				
0	0	0				
0	0	0				
0	0	0				
0	0	0				
0	0	0				
0	0	0				
0	0	0				
0	0	0				
0	0	0				
0	0	0				
0	0	0				
0	0	0				
0	0	0				
0	0	0				
0	0	0				
0	0	0				

<< End of Data >>

For more information regarding this snapshot, please contact your Lexmark team

Lexmark Team			
Title	Name	E-Mail	Phone
Client Executive	Mindy Maher	<a href="mailto:mmaher@lexmark.com">mmaher@lexmark.com</a>	212-880-2837
Site Operations	Mark Ennis	<a href="mailto:mennis@lexmark.com">mennis@lexmark.com</a>	908-210-3030
Systems Engineer	TBD	TBD	TBD

CDW Team CDW Sales Department – 800-705-4239			
Title	Name	E-Mail	Phone
Sales Manager	John Skidmore	<a href="mailto:john.skidmore@cdwg.com">john.skidmore@cdwg.com</a>	(866) 687-3187
Sales Operations	Jon Gray	<a href="mailto:jongray@cdw.com">jongray@cdw.com</a>	(203) 851-7133
		<a href="mailto:NYCDOE@cdwg.com">NYCDOE@cdwg.com</a>	