

Please find enclosed a snap shot of your school's printer environment. The printer breakdown and data encompasses only the printers we can see on your network. You may have additional printers that are locally connected (e.g. USB attached), but those are not included in this breakdown.

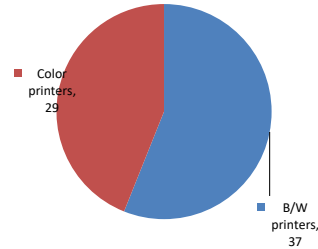
Chart 1 – School Printer Breakdown

This provides your school's enrollment, along with the number of printers, including the distribution between B/W and color printers.

J.H.S. 157 Stephen A. Halsey

Enrollment	1696
B/W printers	37
Color printers	29
Total printers	66

Color/Mono Device Breakdown



From the list provided on page 3 are all of your printers represented? If not, how many are missing Providing Lexmark the asset data that is missing will allow us to give you a more accurate picture of your printer environment.

Do you know how many printers you have in your main office, compared to the number of people who sit in the main office? Reducing the number of devices and using the most efficient models in the right locations can help your school save money.

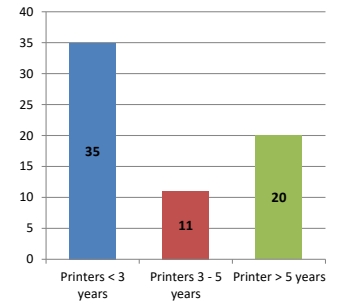
Chart 2 – Printer Age Statistics

Here we show the average age of your printers and show the distribution among 3 age categories; under 3 years old, 3-5 years old and over 5 years old.

Printer Age Statistics

Average Age (years)	4
Printers < 3 years	35
Printers 3 - 5 years	11
Printer > 5 years	20

Printer Age Statistics



The age of your printer fleet plays a large role in your annual printer maintenance and toner cost. The DOE only supports printers 6 years and younger.

Once the warranty expires and the age of your device exceeds 6 years, maintenance and repairs become very costly.

New printers have higher toner yields than older printers, resulting in lower cost per page which saves money.

Newer printers are Energy Star compliant and have advanced eco settings which help reduce energy usage and saves money.

Glossary

B/W - Black and White Printing Only

Color - Color or Black and White Printing

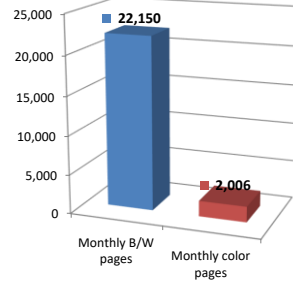
Duplex - Printing on both sides of the paper.

Simplex - Single Sided Printing

Chart 3 – Volume of Pages Printed

This provides your printed page volumes for the previous month for both B/W and color print jobs. In addition, a utilization percentage is calculated by comparing your print volume for each printer to the maximum monthly volume capacity for that printer model.

Color/Mono Pages Printed



Volume of pages printed

Monthly B/W pages	22,150
Monthly color pages	2,006
Total monthly pages	24,156
Color page %	8%
Utilization %	3%

[Do you know if all of your printers are being used and how much?](#)

Knowing where volumes are created helps identify areas for consolidation and helps you select the most efficient printers for replacement.

[Are you printing a large amount of color volume?](#)

Controlling color volume, which typically costs more than black and white, can help your school save money.

Chart 4 – Duplex Breakdown

This section shows the percentage of duplexed (double-sided) pages printed along with your duplex opportunity. Duplex opportunity is the total number of pages that could be printed duplex and does not include single page documents. Keep in mind, only the newer printers report duplex statistics. The duplex opportunity shows the prior month's print volume, from the printers with duplex statistics, that could have been duplexed.

Duplex Vs. Simplex



Duplex breakdown

Duplex opportunity	Info Not Available
Duplex	0%

[Did you know that your printers are able to print on both back and front of the page?](#)

Increasing your school's use of double sided printing helps reduce your environmental impact and will help your school save money.

[The average duplex rate for the NYC DOE is 14%](#)

A modest improvement in duplex of 10% would reduce the carbon footprint by over 435,000 pounds of CO₂ per year, and save the DOE over \$78,000 in paper costs annually.

[Lexmark printers 6 years and younger all have duplex capability. The following duplex initiatives can reduce paper consumption and save money:](#)

- Setting duplex as your default setting on your printer**
- Educating end users about the benefit of duplex printing.**

[For more information on how the DOE is focused on Sustainability check: <http://schools.nyc.gov/community/facilities/sustainability/about/>](#)

Actions you can take to Save your School Money

- Use highest yield toner whenever possible to lower the cost per page.
- Consider replacing printers over 6 years old to optimize eco-friendly printer environment.
- Duplex multiple page documents when possible to reduce paper usage.

Printer details

Model	Serial Number	Age in Years	Utilization	ATS Printer	Avg Mono Pages	Avg Color Pages	Avg Monthly Volume
C544dn	9467RYZ	8					

C748de	50263094325R5	6	25%		2464	20	2484
CS622DE	5029935034M53	0					
CS622DE	50299150325BF	0					
CS622DE	502991503252P	0					
CX510DE	75274694GRBC8	2	5%	Yes	205	163	368
CX510DE	752747946RDC4	2					
CX510DE	752707946TG3V	2	5%	Yes	344	37	381
CX510DE	752707946TG3T	2	5%	Yes	178	154	332
CX510DE	752734946F446	3	22%	Yes	919	612	1531
CX510DE	752731946DVPK	3	22%	Yes	619	944	1563
CX510DE	752731946DVPR	3	1%	Yes	7	55	62
CX510DE	752731946DVNN	3					
CX510DE	752708946HC1W	3					
CX510DE	752723946MCDH	2					
CX510DE	752723946MCD5	2					
CX510DE	752747946RDBK	2					
CX510DE	752707946TG3Z	2					
CX510DE	752707946TG41	2					
CX510DE	75274694GRBBK	2					
CX510DE	75274694GRBBP	2					
CX510DE	75274694GRBH8	2					
CX510DE	75274694GRB6V	2					
CX510DE	75274694GRB7W	2					
CX510DE	75274694GRB9C	2					
CX510DE	75274694GRB94	2					
CX622ADE	75299081427PD	0					
CX725DHE	75288340F2WLK	1	27%		5447	1	5448
E460dn	72HYCPN	8					
E460dn	72HMWRV	8					
MS510DN	70155PLM0WZ0V	4	2%		330		330
MS510dn	451444HH1G3L2	4		Yes			
MS510DN	45146PHH37TK2	3	3%		488		488
MS510dn	451444HH1G3KZ	5					
MS510dn	451433HH13LHB	6					
MS510dn	45146PHH33YVV	3	27%		3763		3763
MS510dn	451433HH13LK7	6					
MS621DN	460083700D8T9	1					
MS810de	406336990D TLC	6					
MS810de	406336990D TLW	6		Yes			
MS810DE	40638D660176H	1					
MS822DE	4064821010K47	1	7%	Yes	3466		3466
MX410de	701545LM0MH9T	5					
MX410de	70155PLM0WYZD	4					
MX410de	701544LM0G0G7	5					
MX410de	701544LM0G06M	5					
MX410de	701533LM0875R	6	18%		1770		1770
MX410DE	70156PLM182HG	3					
MX410DE	70157GLM1F7PN	3					
MX410DE	70157GLM1F7PY	3					
MX410DE	70157GLM1F7P8	3					
MX410DE	70157GLM1F7R1	3					
MX410DE	70157GLM1F7ZB	3					
MX410DE	70157GLM1G9CX	3					
MX410DE	70157GLM1P23K	2					
MX410DE	70157GLM1P23T	2					
MX421ADE	70179012089V2	1					
MX511dhe	701544HH0F6LK	5					
MX511dhe	701544HH0GY4C	5	3%	Yes	403		403
MX511dhe	701544HH0GY5X	5	7%	Yes	809		809
MX522ADHE	701792130C4FK	0					
T630dn	991D4DH	14		Yes			
T650n	79544YN	8	0%	Yes	25		25
T650n	7948LFT	9	3%		638		638
T650n	794V075	8					

<< More data continued on Next Page >>

28Q157 - Jan 2020 - Page 3

Printer Details - Page 2

Model	Serial Number	Age in Years	Utilization	ATS Printer	Avg Mono Pages	Avg Color Pages	Avg Monthly Volume
X734de	94333YZ	6	3%		275	20	295
0	0	0					
0	0	0					
0	0	0					

