

Lexmark Managed Print Services Monthly Report: Jan 2020
28Q190 - J.H.S. 190 Russell Sage, 6817 Austin St, Queens, NY 11375-4237

Please find enclosed a snap shot of your school's printer environment. The printer breakdown and data encompasses only the printers we can see on your network. You may have additional printers that are locally connected (e.g. USB attached), but those are not included in this breakdown.

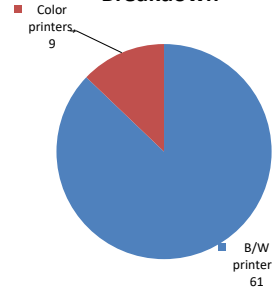
Chart 1 – School Printer Breakdown

This provides your school's enrollment, along with the number of printers, including the distribution between B/W and color printers.

J.H.S. 190 Russell Sage

Enrollment	1143
B/W printers	61
Color printers	9
Total printers	70

Color/Mono Device Breakdown



From the list provided on page 3 are all of your printers represented? If not, how many are missing Providing Lexmark the asset data that is missing will allow us to give you a more accurate picture of your printer environment.

Do you know how many printers you have in your main office, compared to the number of people who sit in the main office? Reducing the number of devices and using the most efficient models in the right locations can help your school save money.

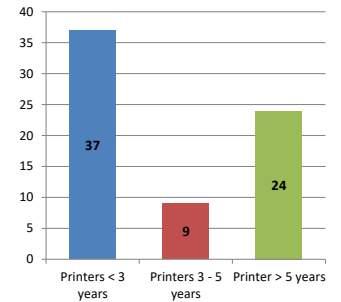
Chart 2 – Printer Age Statistics

Here we show the average age of your printers and show the distribution among 3 age categories; under 3 years old, 3-5 years old and over 5 years old.

Printer Age Statistics

Average Age (years)	4
Printers < 3 years	37
Printers 3 - 5 years	9
Printer > 5 years	24

Printer Age Statistics



The age of your printer fleet plays a large role in your annual printer maintenance and toner cost. The DOE only supports printers 6 years and younger.

Once the warranty expires and the age of your device exceeds 6 years, maintenance and repairs become very costly.

New printers have higher toner yields than older printers, resulting in lower cost per page which saves money.

Newer printers are Energy Star compliant and have advanced eco settings which help reduce energy usage and saves money.

Glossary

B/W - Black and White Printing Only

Color - Color or Black and White Printing

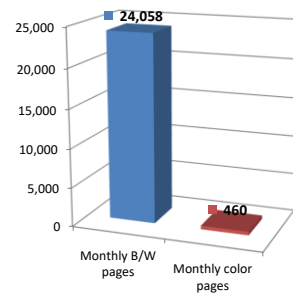
Duplex - Printing on both sides of the paper.

Simplex - Single Sided Printing

Chart 3 – Volume of Pages Printed

This provides your printed page volumes for the previous month for both B/W and color print jobs. In addition, a utilization percentage is calculated by comparing your print volume for each printer to the maximum monthly volume capacity for that printer model.

Color/Mono Pages Printed



Volume of pages printed

Monthly B/W pages	24,058
Monthly color pages	460
Total monthly pages	24,518
Color page %	2%
Utilization %	2%

[Do you know if all of your printers are being used and how much?](#)

Knowing where volumes are created helps identify areas for consolidation and helps you select the most efficient printers for replacement.

[Are you printing a large amount of color volume?](#)

Controlling color volume, which typically costs more than black and white, can help your school save money.

Chart 4 – Duplex Breakdown

This section shows the percentage of duplexed (double-sided) pages printed along with your duplex opportunity. Duplex opportunity is the total number of pages that could be printed duplex and does not include single page documents. Keep in mind, only the newer printers report duplex statistics. The duplex opportunity shows the prior month's print volume, from the printers with duplex statistics, that could have been duplexed.

Duplex Vs. Simplex



Duplex breakdown

Duplex opportunity	Info Not Available
Duplex	0%

[Did you know that your printers are able to print on both back and front of the page?](#)

Increasing your school's use of double sided printing helps reduce your environmental impact and will help your school save money.

[The average duplex rate for the NYC DOE is 14%](#)

A modest improvement in duplex of 10% would reduce the carbon footprint by over 435,000 pounds of CO₂ per year, and save the DOE over \$78,000 in paper costs annually.

[Lexmark printers 6 years and younger all have duplex capability. The following duplex initiatives can reduce paper consumption and save money:](#)

Setting duplex as your default setting on your printer

Educating end users about the benefit of duplex printing.

[For more information on how the DOE is focused on Sustainability check:](#)

<http://schools.nyc.gov/community/facilities/sustainability/about/>

Actions you can take to Save your School Money

- Use highest yield toner whenever possible to lower the cost per page.
- Consider replacing printers over 6 years old to optimize eco-friendly printer environment.
- Duplex multiple page documents when possible to reduce paper usage.

Printer details

Model	Serial Number	Age in Years	Utilization	ATS Printer	Avg Mono Pages	Avg Color Pages	Avg Monthly Volume
CS510de	5027089461B40	7					

CS510DE	502730946FFX6	3	4%	22	253	275
CS510de	5027459450BM6	7	5%	201	175	376
CS510DE	502724945MNNC	2				
CS510DE	502733945P390	2				
CS510DE	4063369907TTP	7				
CS725DE	50289210F3ZLN	0				
CX510DE	752745946R76K	2	2%	121	32	153
CX622ADE	752993114585C	0				
E360dn	72M1GC5	4				
E460dn	72HNMWX	8	4%	409		409
E460dn	72HP6XD	8				
E460dn	72HNMXT	8				
E460dn	72R1P6P	8	5%	515		515
E460dn	72HKNWB	8				
E460dw	72HP3PK	8				
E460dw	72HP3N2	4				
MS510dn	45145PHH2K6V0	4				
MS510dn	45145PHH2HB98	4				
MS510DN	45147GHH402ZH	2				
MS510dn	451444HH1G26D	5				
MS510DN	45147GHH4H1ZC	1				
MS510DN	45147GHH4H1ZW	1	2%	317		317
MS510DN	45147GHH42Z51	2	3%	429		429
MS510dn	451420HH03KK0	7				
MS510dn	451420HH03KHC	7				
MS510DN	45147GHH4HNP2	2	5%	679		679
MS510dn	451456HH29X2G	4				
MS510DN	45147GHH4D7K2	2	6%	907		907
MS510DN	45147GHH428G5	2	14%	1945		1945
MS510DN	45148PHH4P77Z	2				
MS510dn	451433HH119NV	6				
MS510DN	45147GHH42Z4D	2				
MS510DN	45147GHH42Z4H	2				
MS510DN	45147GHH42Z5L	2				
MS510DN	45147GHH42Z54	2				
MS510DN	45147GHH402Z3	2				
MS510DN	45147GHH4D7KL	2	16%	2284		2284
MS621DN	4600826007YNT	1	1%	235		235
MS621DN	460083600CZ6C	1				
MS621DN	460083600CZ6H	1				
MS621DN	460083600CZ67	1				
MS621DN	460083600CZND	1	9%	1791		1791
MS621DN	460091730TMLC	0				
MS621DN	460091730TP3F	0				
MS621DN	46009333107PV	0				
MS621DN	46009333107PY	0				
MS621DN	46008160030H0	0				
MS621DN	46008160030FX	0				
MS810de	4063369907TW5	7				
MS810de	4063369907TZN	4				
MS810de	4063369907TZH	7	1%	160		160
MS810de	4063369907TZM	7	4%	894		894
MS810de	406336990DTKC	5	2%	342	Yes	342
MS810DE	40637D6606CDF	2	3%	512		512
MS822DE	4064821010K57	1	5%	2334		2334
MS822DE	4064902014L36	0	3%	1250		1250
MX410de	70156PLM123N3	4				
MX421ADE	701792230CBWR	0				
MX711DHHE	74638D660041M	2	14%	3612	Yes	3612
MX711dhe	74635C6602GDF	4	1%	294	Yes	294
MX711DHHE	74638D6600437	2	19%	4805		4805
MX711DHHE	74638D6600428	2				
T640n	791RY0P	12				
T650dn Low Volt CA US	7954549	8				

<< More data continued on Next Page >>

28Q190 - Jan 2020 - Page 3

Printer Details - Page 2

Model	Serial Number	Age in Years	Utilization	ATS Printer	Avg Mono Pages	Avg Color Pages	Avg Monthly Volume
T650n	793T1Z4	10					
T650n	793605W	10					
T650n	794CM6N	9		Yes			
T650n	794DVLZ	9		Yes			

