

**Lexmark Managed Print Services Monthly Report: Jan 2020**  
**30Q070 - P.S. 070 Queens, 30-45 42 STREET, Queens, NY 11103-3035**

Please find enclosed a snap shot of your school's printer environment. The printer breakdown and data encompasses only the printers we can see on your network. You may have additional printers that are locally connected (e.g. USB attached), but those are not included in this breakdown.

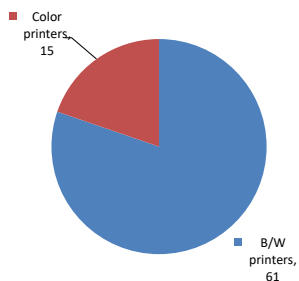
**Chart 1 – School Printer Breakdown**

This provides your school's enrollment, along with the number of printers, including the distribution between B/W and color printers.

**P.S. 070 Queens**

Enrollment	809
B/W printers	61
Color printers	15
Total printers	76

**Color/Mono Device Breakdown**



From the list provided on page 3 are all of your printers represented? If not, how many are missing Providing Lexmark the asset data that is missing will allow us to give you a more accurate picture of your printer environment.

Do you know how many printers you have in your main office, compared to the number of people who sit in the main office? Reducing the number of devices and using the most efficient models in the right locations can help your school save money.

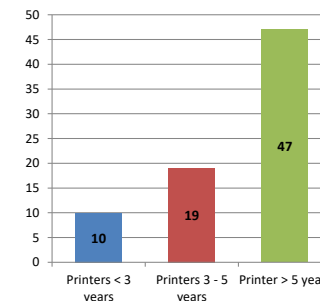
**Chart 2 – Printer Age Statistics**

Here we show the average age of your printers and show the distribution among 3 age categories; under 3 years old, 3-5 years old and over 5 years old.

**Printer Age Statistics**

Average Age (years)	5
Printers < 3 years	10
Printers 3 - 5 years	19
Printer > 5 years	47

**Printer Age Statistics**



The age of your printer fleet plays a large role in your annual printer maintenance and toner cost. The DOE only supports printers 6 years and younger.

Once the warranty expires and the age of your device exceeds 6 years, maintenance and repairs become very costly.

New printers have higher toner yields than older printers, resulting in lower cost per page which saves money.

Newer printers are Energy Star compliant and have advanced eco settings which help reduce energy usage and saves money.

**Glossary**

B/W - Black and White Printing Only

Color - Color or Black and White Printing

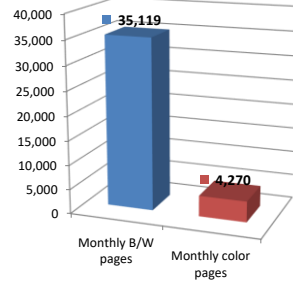
Duplex - Printing on both sides of the paper.

Simplex - Single Sided Printing

### Chart 3 – Volume of Pages Printed

This provides your printed page volumes for the previous month for both B/W and color print jobs. In addition, a utilization percentage is calculated by comparing your print volume for each printer to the maximum monthly volume capacity for that printer model.

Color/Mono Pages Printed



**Volume of pages printed**

Monthly B/W pages	35,119
Monthly color pages	4,270
Total monthly pages	39,389
Color page %	11%
Utilization %	3%

[Do you know if all of your printers are being used and how much?](#)

**Knowing where volumes are created helps identify areas for consolidation and helps you select the most efficient printers for replacement.**

[Are you printing a large amount of color volume?](#)

**Controlling color volume, which typically costs more than black and white, can help your school save money.**

### Chart 4 – Duplex Breakdown

This section shows the percentage of duplexed (double-sided) pages printed along with your duplex opportunity. Duplex opportunity is the total number of pages that could be printed duplex and does not include single page documents. Keep in mind, only the newer printers report duplex statistics. The duplex opportunity shows the prior month's print volume, from the printers with duplex statistics, that could have been duplexed.

Duplex Vs. Simplex



**Duplex breakdown**

Duplex opportunity	Info Not Available
Duplex	0%

[Did you know that your printers are able to print on both back and front of the page?](#)

**Increasing your school's use of double sided printing helps reduce your environmental impact and will help your school save money.**

[The average duplex rate for the NYC DOE is 14%](#)

**A modest improvement in duplex of 10% would reduce the carbon footprint by over 435,000 pounds of CO<sub>2</sub> per year, and save the DOE over \$78,000 in paper costs annually.**

[Lexmark printers 6 years and younger all have duplex capability. The following duplex initiatives can reduce paper consumption and save money:](#)

**Setting duplex as your default setting on your printer**

**Educating end users about the benefit of duplex printing.**

[For more information on how the DOE is focused on Sustainability check:](#)

<http://schools.nyc.gov/community/facilities/sustainability/about/>

## Actions you can take to Save your School Money

- Use highest yield toner whenever possible to lower the cost per page.
- Consider replacing printers over 6 years old to optimize eco-friendly printer environment.
- Duplex multiple page documents when possible to reduce paper usage.

**Printer details**

Model	Serial Number	Age in Years	Utilization	ATS Printer	Avg Mono Pages	Avg Color Pages	Avg Monthly Volume
C736dn	9424GX6	9					

C748de	5026469422KY9	6					
CS510de	5027159461YW3	6	14%	Yes	112	879	991
CS510de	502726946BTC2	4	21%		58	1445	1503
CS622DE	5029829040FLW	1					
CS622DE	5029829040FT4	1					
CS622DE	5029829040FW5	1	3%		236	50	286
CS725DE	50289050F3R XR	0					
CX510de	7527349469MV0	4					
CX510de	7527109460M4P	6					
CX510de	75274294638R4	6					
CX510de	7527109460MY0	6					
CX510de	7527109460MWP	6	4%	Yes	20	243	263
CX622ADE	75299081427MF	0					
CX622ADE	75299311458BT	0	20%		299	1653	1952
E460dn	72HYTCF	8					
E460dn	72HP0XT	8	30%		2968		2968
MS510DN	45146PHH370Y5	3					
MS510dn	451444HH1CCWX	6	30%		4206		4206
MS510dn	451444HH1CCXK	6					
MS510dn	451444HH1CCXD	6					
MS510DN	45146PHH39NTF	3					
MS510dn	451444HH1CCX5	6	8%		1116		1116
MS510dn	451444HH1H4LY	6					
MS510dn	451444HH1CCVD	6					
MS510dn	451444HH1G285	6	0%		27		27
MS510dn	451444HH1CCXB	6					
MS510dn	451444HH1CCXN	6	14%		2001		2001
MS510dn	451444HH1CCXH	6					
MS510dn	451444HH1G27Y	6					
MS510dn	451444HH1H4M6	6					
MS510dn	451444HH1G27R	6	2%		265		265
MS510dn	451444HH1CCX7	6					
MS510dn	451444HH1CCX9	6	5%		753		753
MS510dn	451444HH1CCX8	6	6%		842		842
MS510dn	451444HH1G28C	6					
MS510dn	451444HH1CCP2	6	27%		3770		3770
MS510dn	451444HH1CCXF	6					
MS510dn	451444HH1G283	6					
MS510dn	451444HH1G27D	6					
MS510dn	451444HH1CCX1	6	1%		140		140
MS510dn	45145PHH2K6HW	4					
MS510dn	45145PHH2HB4B	4					
MS510dn	45145PHH2KPCV	4					
MS510dn	45145PHH2K71L	4	2%		332		332
MS510dn	451444HH1CCXM	6					
MS510dn	45146PHH2X3DF	4					
MS510dn	451431HH0CYM9	7					
MS510dn	45145PHH2VY6P	4					
MS510dn	451444HH1G27V	6	12%		1622		1622
MS510dn	45146PHH2X3R6	4					
MS510dn	451444HH1CCRY	6					
MS510dn	45145PHH2K712	4	23%		3173		3173
MS510dn	451457HH2H0LT	4					
MS510dn	451457HH2H0LF	4					
MS510dn	45145PHH2VY6L	4	8%		1146		1146
MS510DN	752711946C6B5	4	11%		1602		1602
MS510dn	451444HH1G287	6					
MS510dn	451444HH1G27T	6	5%		733		733
MS510DN	45147GHH4K643	2					
MS621DN	4600820004MXM	1	4%		765		765
MS810	45146PHH36R98	4					
MS810	45146PHH35F92	3					
MS810	45145PHH2KPD4	4	3%		1941		1941
MS810de	406347990KN13	6					

<< More data continued on Next Page >>

30Q070 - Jan 2020 - Page 3

### Printer Details - Page 2

Model	Serial Number	Age in Years	Utilization	ATS Printer	Avg Mono Pages	Avg Color Pages	Avg Monthly Volume
MS810de	406347990KN08	6					
MS810de	406347990KN0K	6					
MS810de	4063369906C36	6					
MS810de	406347990KMZW	6	11%	Yes	2252		2252

MS810de	406347990KN0F	6		Yes		
MS810de	4063369908L49	6	9%	Yes	1861	1861
MS810de	406347990KN0D	6	4%	Yes	750	750
MS810de	406347990KN0H	6	2%		497	497
MX711DHE	74638D6600BGN	2	4%		972	972
MX711DHE	74636C660104Z	3	3%	Yes	660	660
X656de	792XMTV	10				
0	0	0				
0	0	0				
0	0	0				
0	0	0				
0	0	0				
0	0	0				
0	0	0				
0	0	0				
0	0	0				
0	0	0				
0	0	0				
0	0	0				
0	0	0				
0	0	0				
0	0	0				
0	0	0				
0	0	0				
0	0	0				
0	0	0				
0	0	0				
0	0	0				
0	0	0				
0	0	0				
0	0	0				
0	0	0				
0	0	0				
0	0	0				
0	0	0				
0	0	0				
0	0	0				
0	0	0				
0	0	0				
0	0	0				
0	0	0				
0	0	0				
0	0	0				
0	0	0				
0	0	0				
0	0	0				
0	0	0				
0	0	0				
0	0	0				
0	0	0				

<< End of Data >>

For more information regarding this snapshot, please contact your Lexmark team

Lexmark Team			
Title	Name	E-Mail	Phone
Client Executive	Mindy Maher	<a href="mailto:mmaher@lexmark.com">mmaher@lexmark.com</a>	212-880-2837
Site Operations	Mark Ennis	<a href="mailto:mennis@lexmark.com">mennis@lexmark.com</a>	908-210-3030
Systems Engineer	TBD	TBD	TBD

CDW Team CDW Sales Department – 800-705-4239			
Title	Name	E-Mail	Phone
Sales Manager	John Skidmore	<a href="mailto:john.skidmore@cdwg.com">john.skidmore@cdwg.com</a>	(866) 687-3187
Sales Operations	Jon Gray	<a href="mailto:jongray@cdw.com">jongray@cdw.com</a>	(203) 851-7133
		<a href="mailto:NYCDOE@cdwg.com">NYCDOE@cdwg.com</a>	