

Please find enclosed a snap shot of your school's printer environment. The printer breakdown and data encompasses only the printers we can see on your network. You may have additional printers that are locally connected (e.g. USB attached), but those are not included in this breakdown.

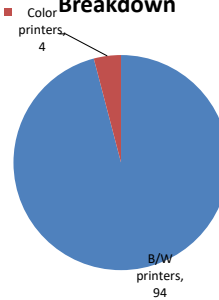
Chart 1 – School Printer Breakdown

This provides your school's enrollment, along with the number of printers, including the distribution between B/W and color printers.

PUBLIC SCHOOL 149

Enrollment	940
B/W printers	94
Color printers	4
Total printers	98

Color/Mono Device Breakdown



From the list provided on page 3 are all of your printers represented? If not, how many are missing Providing Lexmark the asset data that is missing will allow us to give you a more accurate picture of your printer environment.

Do you know how many printers you have in your main office, compared to the number of people who sit in the main office?

Reducing the number of devices and using the most efficient models in the right locations can help your school save money.

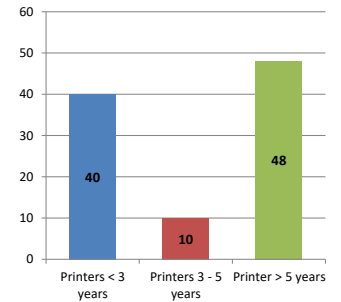
Chart 2 – Printer Age Statistics

Here we show the average age of your printers and show the distribution among 3 age categories; under 3 years old, 3-5 years old and over 5 years old.

Printer Age Statistics

Average Age (years)	5
Printers < 3 years	40
Printers 3 - 5 years	10
Printer > 5 years	48

Printer Age Statistics



The age of your printer fleet plays a large role in your annual printer maintenance and toner cost. The DOE only supports printers 6 years and younger.

Once the warranty expires and the age of your device exceeds 6 years, maintenance and repairs become very costly.

New printers have higher toner yields than older printers, resulting in lower cost per page which saves money.

Newer printers are Energy Star compliant and have advanced eco settings which help reduce energy usage and saves money.

Glossary

B/W - Black and White Printing Only

Color - Color or Black and White Printing

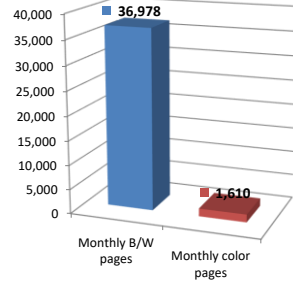
Duplex - Printing on both sides of the paper.

Simplex - Single Sided Printing

Chart 3 – Volume of Pages Printed

This provides your printed page volumes for the previous month for both B/W and color print jobs. In addition, a utilization percentage is calculated by comparing your print volume for each printer to the maximum monthly volume capacity for that printer model.

Color/Mono Pages Printed



Volume of pages printed

Monthly B/W pages	36,978
Monthly color pages	1,610
Total monthly pages	38,588
Color page %	4%
Utilization %	2%

[Do you know if all of your printers are being used and how much?](#)

Knowing where volumes are created helps identify areas for consolidation and helps you select the most efficient printers for replacement.

[Are you printing a large amount of color volume?](#)

Controlling color volume, which typically costs more than black and white, can help your school save money.

Chart 4 – Duplex Breakdown

This section shows the percentage of duplexed (double-sided) pages printed along with your duplex opportunity. Duplex opportunity is the total number of pages that could be printed duplex and does not include single page documents. Keep in mind, only the newer printers report duplex statistics. The duplex opportunity shows the prior month's print volume, from the printers with duplex statistics, that could have been duplexed.

Duplex Vs. Simplex



Duplex breakdown

Duplex opportunity	Info Not Available
Duplex	0%

[Did you know that your printers are able to print on both back and front of the page?](#)

Increasing your school's use of double sided printing helps reduce your environmental impact and will help your school save money.

[The average duplex rate for the NYC DOE is 14%](#)

A modest improvement in duplex of 10% would reduce the carbon footprint by over 435,000 pounds of CO₂ per year, and save the DOE over \$78,000 in paper costs annually.

[Lexmark printers 6 years and younger all have duplex capability. The following duplex initiatives can reduce paper consumption and save money:](#)

Setting duplex as your default setting on your printer

Educating end users about the benefit of duplex printing.

[For more information on how the DOE is focused on Sustainability check:](#)

<http://schools.nyc.gov/community/facilities/sustainability/about/>

Actions you can take to Save your School Money

- Use highest yield toner whenever possible to lower the cost per page.
- Consider replacing printers over 6 years old to optimize eco-friendly printer environment.
- Duplex multiple page documents when possible to reduce paper usage.

Printer details

Model	Serial Number	Age in Years	Utilization	ATS Printer	Avg Mono Pages	Avg Color Pages	Avg Monthly Volume
CX510DE	752709946HFR1	3	23%	Yes	795	805	1600

CX510DE	752709946HFVK	3	8%	Yes	400	140	540
CX510DE	752734946F457	3	7%		89	368	457
CX510DE	752709946HFVC	3	8%	Yes	271	297	568
E250dn	62040NG	13					
E250dn	62040NF	13					
E250dn	72B66R8	14					
E460dn	72HYR5X	7	2%		193		193
E460dn	72HHDLN	9	1%		143		143
E460dn	72HDDMT	9					
E460dn	72HMMWN3	8	1%		114		114
E460dn	72HYR5H	7					
E460dn	72HBH60	9	0%		16		16
E460dn	72HP6TZ	8					
E460dn	72HYR5M	7					
E460dn	72HBH6P	9					
E460dn	72HHDL3	9					
E460dn	72HDDMY	9					
E460dn	72HHF8R	9	3%		305		305
E460dn	72HP6V2	8					
E460dn	72HMMW8	8					
E460dn	72HYR5W	7					
E460dn	72HYR50	7					
E460dn	72HYR5P	7					
E460dn	72HHDLK	9					
E460dn	72HDDMP	9	1%		115		115
E460dn	72HHDLR	9	1%		88		88
E460dn	72HHDLH	9	0%		23		23
E460dn	72HBH52	9					
E460dn	72HHDLL	9					
E460dn	72HDDMR	9					
E460dn	72HDDMM	9					
E460dn	72HDDMX	9					
E460dn	72HHDLX	9					
E460dn	72HMMMV	8					
E460dn	72HYR5F	7					
MS510dn	451432HH0RF14	6	8%		1128		1128
MS510dn	451432HH0RF03	6	7%		969		969
MS510DN	7463479906MKV	5					
MS510DN	701544HH0GY2G	5	1%		76		76
MS621DN	460083700D8P3	1	3%		529		529
MS621DN	4600820004MM3	1	2%		420		420
MS621DN	4600820004MP9	1					
MS621DN	460084800K324	1	2%		440		440
MS621DN	460084800K325	1	12%		2401		2401
MS621DN	460090730NMDF	1	6%		1187		1187
MS621DN	460090730NMDG	1	4%		814		814
MS621DN	460090730NMD5	1	2%		380		380
MS621DN	46009333107GH	0					
MS621DN	46009333107LW	0					
MS621DN	46009333107L7	0					
MS621DN	46009333107MB	0					
MS621DN	46009333107MC	0					
MS621DN	46009333107MF	0					
MS621DN	46009333107MG	0					
MS621DN	46009333107MH	0					
MS621DN	46009333107MK	0					
MS621DN	46009333107ML	0					
MS621DN	46009333107MN	0					
MS621DN	46009333107M6	0					
MS621DN	46009333107M8	0					
MS621DN	46009333107VL	0					
MS621DN	46009333107VT	0					
MS621DN	46009333107VV	0					
MS621DN	46009333107VW	0					

<< More data continued on Next Page >>

30Q149 - Jan 2020 - Page 3

Printer Details - Page 2

Model	Serial Number	Age in Years	Utilization	ATS Printer	Avg Mono Pages	Avg Color Pages	Avg Monthly Volume
MS621DN	46009333107VY	0					
MS621DN	4600942313T40	0					
MS621DN	4600942313T41	0					
MS621DN	4600942313T42	0					

MS810de	4063369907TY8	6	10%	Yes	1921	1921
MS810DE	40637D6606V67	2	8%		1670	1670
MS810DE	40637D6606V5R	2	5%		991	991
MS810DE	40637D6606V5Z	2	5%		1061	1061
MS810DE	40636C6606F0T	3	18%		3532	3532
MS810DE	40636C6606F0Y	3	9%		1703	1703
MS810de	4063369907TYC	6	14%	Yes	2774	2774
MS810de	4063369907V1T	6	3%	Yes	662	662
MS810de	4063369907V1H	6	9%		1809	1809
MS822DE	4064902014L8B	1	2%		1088	1088
MS822DE	4064902014L8D	1	1%		513	513
MS822DE	4064902014L83	1	0%		20	20
MS822DE	4064902014L84	1	3%		1525	1525
MX511dhe	701544HH0GY7B	5				
MX511dhe	701544HH0GY44	5				
MX511dhe	701544HH0GY3R	5		Yes		
MX511dhe	701544HH0GY29	5	6%		767	767
MX711dhe	74634C66017KK	5		Yes		
MX711dhe	74635C6602WL7	4		Yes		
MX722ADHE	74649310226ZC	0	2%		1967	1967
T630n	992B9ZZ	15	21%		3088	3088
T630n	992B9ZX	15	1%		211	211
T640n	791Z00N	12				
T640n	791YZR0	12				
T640n	791Z00L	12				
T640n	791YZPY	12				
T640n	792YX17	11	6%		780	780
T650n	7937BH1	9				
T650n	7933TTY	9				
0	0	0				
0	0	0				
0	0	0				
0	0	0				
0	0	0				
0	0	0				
0	0	0				
0	0	0				
0	0	0				
0	0	0				
0	0	0				
0	0	0				
0	0	0				
0	0	0				
0	0	0				
0	0	0				
0	0	0				
0	0	0				
0	0	0				
0	0	0				
0	0	0				
0	0	0				
0	0	0				

<< End of Data >>

For more information regarding this snapshot, please contact your Lexmark team

Lexmark Team			
Title	Name	E-Mail	Phone
Client Executive	Mindy Maher	mmaher@lexmark.com	212-880-2837
Site Operations	Mark Ennis	mennis@lexmark.com	908-210-3030
Systems Engineer	TBD	TBD	TBD

CDW Team CDW Sales Department – 800-705-4239			
Title	Name	E-Mail	Phone
Sales Manager	John Skidmore	john.skidmore@cdwg.com	(866) 687-3187
Sales Operations	Jon Gray	jongray@cdw.com	(203) 851-7133
		NYCDOE@cdwg.com	