

Please find enclosed a snap shot of your school's printer environment. The printer breakdown and data encompasses only the printers we can see on your network. You may have additional printers that are locally connected (e.g. USB attached), but those are not included in this breakdown.

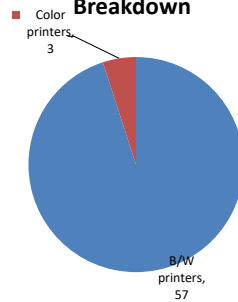
Chart 1 – School Printer Breakdown

This provides your school's enrollment, along with the number of printers, including the distribution between B/W and color printers.

P.S. 152 Gwendoline N. Alleyne School

Enrollment	938
B/W printers	57
Color printers	3
Total printers	60

Color/Mono Device Breakdown



From the list provided on page 3 are all of your printers represented? If not, how many are missing Providing Lexmark the asset data that is missing will allow us to give you a more accurate picture of your printer environment.

Do you know how many printers you have in your main office, compared to the number of people who sit in the main office?

Reducing the number of devices and using the most efficient models in the right locations can help your school save money.

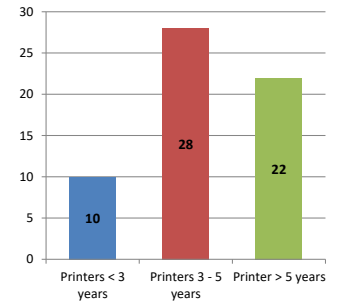
Chart 2 – Printer Age Statistics

Here we show the average age of your printers and show the distribution among 3 age categories; under 3 years old, 3-5 years old and over 5 years old.

Printer Age Statistics

Average Age (years)	5
Printers < 3 years	10
Printers 3 - 5 years	28
Printer > 5 years	22

Printer Age Statistics



The age of your printer fleet plays a large role in your annual printer maintenance and toner cost. The DOE only supports printers 6 years and younger.

Once the warranty expires and the age of your device exceeds 6 years, maintenance and repairs become very costly.

New printers have higher toner yields than older printers, resulting in lower cost per page which saves money.

Newer printers are Energy Star compliant and have advanced eco settings which help reduce energy usage and saves money.

Glossary

B/W - Black and White Printing Only

Color - Color or Black and White Printing

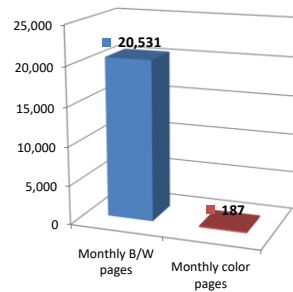
Duplex - Printing on both sides of the paper.

Simplex - Single Sided Printing

Chart 3 – Volume of Pages Printed

This provides your printed page volumes for the previous month for both B/W and color print jobs. In addition, a utilization percentage is calculated by comparing your print volume for each printer to the maximum monthly volume capacity for that printer model.

Color/Mono Pages Printed



Volume of pages printed

Monthly B/W pages	20,531
Monthly color pages	187
Total monthly pages	20,718
Color page %	1%
Utilization %	1%

[Do you know if all of your printers are being used and how much?](#)

Knowing where volumes are created helps identify areas for consolidation and helps you select the most efficient printers for replacement.

[Are you printing a large amount of color volume?](#)

Controlling color volume, which typically costs more than black and white, can help your school save money.

Chart 4 – Duplex Breakdown

This section shows the percentage of duplexed (double-sided) pages printed along with your duplex opportunity. Duplex opportunity is the total number of pages that could be printed duplex and does not include single page documents. Keep in mind, only the newer printers report duplex statistics. The duplex opportunity shows the prior month's print volume, from the printers with duplex statistics, that could have been duplexed.

Duplex Vs. Simplex



Duplex breakdown

Duplex opportunity	Info Not Available
Duplex	0%

[Did you know that your printers are able to print on both back and front of the page?](#)

Increasing your school's use of double sided printing helps reduce your environmental impact and will help your school save money.

[The average duplex rate for the NYC DOE is 14%](#)

A modest improvement in duplex of 10% would reduce the carbon footprint by over 435,000 pounds of CO₂ per year, and save the DOE over \$78,000 in paper costs annually.

[Lexmark printers 6 years and younger all have duplex capability. The following duplex initiatives can reduce paper consumption and save money:](#)

Setting duplex as your default setting on your printer
Educating end users about the benefit of duplex printing.

[For more information on how the DOE is focused on Sustainability check: <http://schools.nyc.gov/community/facilities/sustainability/about/>](#)

Actions you can take to Save your School Money

Use highest yield toner whenever possible to lower the cost per page.
 Consider replacing printers over 6 years old to optimize eco-friendly printer environment.
 Duplex multiple page documents when possible to reduce paper usage.

Printer details

Model	Serial Number	Age in Years	Utilization	ATS Printer	Avg Mono Pages	Avg Color Pages	Avg Monthly Volume
C736dn Low Volt LAD US	9447313	8					

CS725DE	5028703010Z4B	3	1%		39	187	226
CX510de	7527349469MV2	4	5%	Yes	327		327
E460dw	72HWNLF	8					
E460dw	72HWNLYR	8	3%		311		311
E460dw	72HGYNE	9					
E460dw	72HWNLY	8					
MS510DN	70156PHH17VNZ	3	2%	Yes	252		252
MS510dn	45146PHH2YMWZ	4					
MS510dn	45146PHH2X3P5	4	0%		20		20
MS510dn	45146PHH2X3LW	4					
MS510dn	451455HH28BF2	5	0%		5		5
MS510DN	45147GHH3TZCK	3					
MS510DN	45147GHH3V01F	3					
MS510DN	45147GHH3V019	3	4%		616		616
MS510DN	45147GHH3V024	3					
MS510DN	45147GHH3V025	3					
MS810	45146PHH2X3PD	4	0%		30		30
MS810de	406347990KN55	4		Yes			
MS810de	4063369908RW4	6					
MS810de	4063369904DNN	7					
MS810de	4063369904DPV	7					
MS810de	4063369908RWR	6					
MS810de	4063369908RWN	6					
MS810de	406336990462G	7	0%		99		99
MS810de	40635C660065D	5	2%		326		326
MS810de	4063369904DNP	7					
MS810de	40635C6600666	5					
MS810de	406336990463L	7					
MS810de	406336990460T	7					
MS810de	40635C6600663	5					
MS810de	40635C660065H	5	0%		9		9
MS810de	4063369904DT4	7					
MS810de	40635C660065V	5	7%		1300		1300
MS810DE	40637C66003YG	3	18%	Yes	3636		3636
MS810de	40635C66006N0Z	4		Yes			
MS810de	406347990N7FR	5	1%	Yes	238		238
MS810de	406347990N7FV	4	6%	Yes	1112		1112
MS810de	4063369908RVZ	6					
MS810n	40635C660064W	5					
MS810n	40635C660064X	5					
MS810n	40635C660066D	5	0%		187		187
MS810n	40635C660065N	5	3%		1570		1570
MS810n	40635C660065K	5	9%		4431		4431
MS810n	40635C660065W	5					
MS810n	40635C660066C	5					
MS810n	40635C660065B	5	4%		1835		1835
MS822DE	4064912015K9T	0					
MS822DE	4064912015K02	0					
MX410DE	70156PLM1BWH3	3	0%		29		29
MX410DE	70156PLM1BWRB	3					
MX511DHE	70156PHH1646V	3					
MX711dhe	74635C66032ZP	4	6%	Yes	1602		1602
MX711DHE	74637C660000N	3	0%	Yes	13		13
T640	7932FWG	11					
T640n	792RH0H	11	4%	Yes	567		567
T650n	794LOMF	9					
T650n	794NMB9	9		Yes			
T650n	794CM7H	9		Yes			
X656de	40635C660066X	5	7%		1977		1977

<< End of Data >>

For more information regarding this snapshot, please contact your Lexmark team

Lexmark Team

CDW Team
CDW Sales Department – 800-705-4239

Title	Name	E-Mail	Phone
Client Executive	Mindy Maher	mmaher@lexmark.com	212-880-2837
Site Operations	Mark Ennis	mennis@lexmark.com	908-210-3030
Systems Engineer	TBD	TBD	TBD

Title	Name	E-Mail	Phone
Sales Manager	John Skidmore	john.skidmore@cdwg.com	(866) 687-3187
Sales Operations	Jon Gray	jongray@cdw.com	(203) 851-7133
		NYCDOE@cdwg.com	