

Please find enclosed a snap shot of your school's printer environment. The printer breakdown and data encompasses only the printers we can see on your network. You may have additional printers that are locally connected (e.g. USB attached), but those are not included in this breakdown.

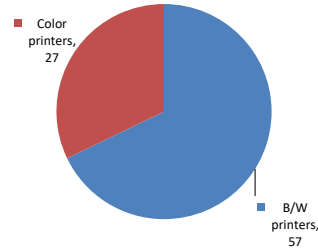
Chart 1 – School Printer Breakdown

This provides your school's enrollment, along with the number of printers, including the distribution between B/W and color printers.

William Cullen Bryant High School

Enrollment	2312
B/W printers	57
Color printers	27
Total printers	84

Color/Mono Device Breakdown



From the list provided on page 3 are all of your printers represented? If not, how many are missing Providing Lexmark the asset data that is missing will allow us to give you a more accurate picture of your printer environment.

Do you know how many printers you have in your main office, compared to the number of people who sit in the main office?

Reducing the number of devices and using the most efficient models in the right locations can help your school save money.

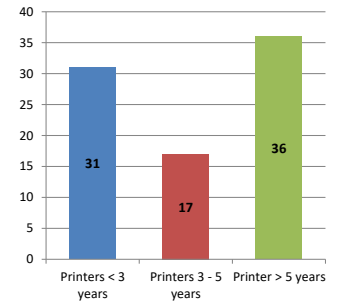
Chart 2 – Printer Age Statistics

Here we show the average age of your printers and show the distribution among 3 age categories; under 3 years old, 3-5 years old and over 5 years old.

Printer Age Statistics

Average Age (years)	5
Printers < 3 years	31
Printers 3 - 5 years	17
Printer > 5 years	36

Printer Age Statistics



The age of your printer fleet plays a large role in your annual printer maintenance and toner cost. The DOE only supports printers 6 years and younger.

Once the warranty expires and the age of your device exceeds 6 years, maintenance and repairs become very costly.

New printers have higher toner yields than older printers, resulting in lower cost per page which saves money.

Newer printers are Energy Star compliant and have advanced eco settings which help reduce energy usage and saves money.

Glossary

B/W - Black and White Printing Only

Color - Color or Black and White Printing

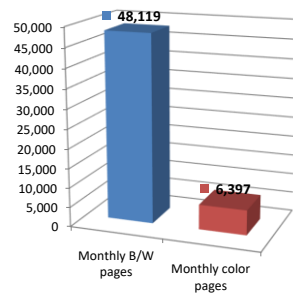
Duplex - Printing on both sides of the paper.

Simplex - Single Sided Printing

Chart 3 – Volume of Pages Printed

This provides your printed page volumes for the previous month for both B/W and color print jobs. In addition, a utilization percentage is calculated by comparing your print volume for each printer to the maximum monthly volume capacity for that printer model.

Color/Mono Pages Printed



Volume of pages printed

Monthly B/W pages	48,119
Monthly color pages	6,397
Total monthly pages	54,516
Color page %	12%
Utilization %	3%

[Do you know if all of your printers are being used and how much?](#)

Knowing where volumes are created helps identify areas for consolidation and helps you select the most efficient printers for replacement.

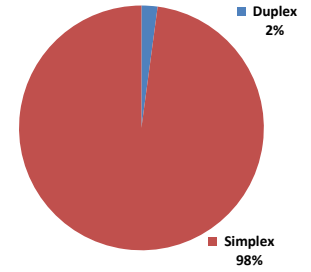
[Are you printing a large amount of color volume?](#)

Controlling color volume, which typically costs more than black and white, can help your school save money.

Chart 4 – Duplex Breakdown

This section shows the percentage of duplexed (double-sided) pages printed along with your duplex opportunity. Duplex opportunity is the total number of pages that could be printed duplex and does not include single page documents. Keep in mind, only the newer printers report duplex statistics. The duplex opportunity shows the prior month's print volume, from the printers with duplex statistics, that could have been duplexed.

Duplex Vs. Simplex



Duplex breakdown

Duplex opportunity	368
Duplex	2%

[Did you know that your printers are able to print on both back and front of the page?](#)

Increasing your school's use of double sided printing helps reduce your environmental impact and will help your school save money.

[The average duplex rate for the NYC DOE is 14%](#)

A modest improvement in duplex of 10% would reduce the carbon footprint by over 435,000 pounds of CO₂ per year, and save the DOE over \$78,000 in paper costs annually.

[Lexmark printers 6 years and younger all have duplex capability. The following duplex initiatives can reduce paper consumption and save money:](#)

Setting duplex as your default setting on your printer

Educating end users about the benefit of duplex printing.

[For more information on how the DOE is focused on Sustainability check:](#)

<http://schools.nyc.gov/community/facilities/sustainability/about/>

Actions you can take to Save your School Money

- Use highest yield toner whenever possible to lower the cost per page.
- Consider replacing printers over 6 years old to optimize eco-friendly printer environment.
- Duplex multiple page documents when possible to reduce paper usage.

Printer details

Model	Serial Number	Age in Years	Utilization	ATS Printer	Avg Mono Pages	Avg Color Pages	Avg Monthly Volume
C736dn	9442FM0	9					

CS510de	502726946BTMW	3				
CS510DE	502730946FFBD	3				
CS510DE	502730946FFB1	3				
CS510de	5027309456H16	5				
CS510de	5027459450BVN	7	14%	323	683	1006
CS510DE	502730946FFBF	3				
CS510DE	502739945R1VH	2				
CX510DE	752723946MCM2	2				
CX510DE	752708946HBW0	2				
CX510DE	752709946HFP3	3				
CX510DE	752723946MCC3	2				
CX510DE	752731946NCMM	2				
CX510DE	752744946R5HG	2				
CX510DE	752745946R755	2				
CX510DE	752747946RDG4	2				
CX622ADE	7529836140VLR	1				
CX725DHE	75287520121VF	2	11%	733	1566	2299
CX725DHE	7528747011Y9H	2	21%	1834	2279	4113
CX725DHE	7528747011Y93	2	9%	995	851	1846
CX725DHE	75289040F3MNR	0				
E460dn	72HPONX	4				
E460dw	72H1452	8				
MS510dn	451432HH0RDW4	6				
MS510dn	451432HH0TFY4	6	6%	843		843
MS510dn	451432HH0TFY9	6				
MS510DN	45147GHH402HG	2				
MS510dn	451444HH1F247	5				
MS510DN	45147GHH402HK	2				
MS510DN	45147GHH402HR	2				
MS621DN	460084800K2TP	1				
MS621DN	460093531148N	0				
MS810	451444HH18X4D	6				
MS810	451432HH0TFGP	6				
MS810	451432HH0RDW1	6				
MS810	451432HH0TFY7	6				
MS810de	4063369906BVP	6	8%	1587		1587
MS810DE	40636C6604L9W	3				
MS810DE	40637C66011HH	3				
MS810de	40635C6604LWY	4				
MS810de	40635C6604LW0	4				
MS810de	40634C6600M2Z	5	8%	1690		1690
MS810de	4063369906BVF	6				
MS810de	4063369906BVD	6				
MS810de	4063369908T35	6				
MS810de	40634C6600M2R	5	13%	2558		2558
MS810de	40635C6604LVX	4				
MS810de	4063369908T36	6	2%	Yes	300	300
MS810de	40635C6604LVW	4				
MS810de	4063369906BVV	6		Yes		
MS810DE	40637D66044LB	2				
MS810de	406336990D9KM	4	0%	79		79
MS810DE	40636C66046RL	3				
MS810n	40634C6600M2P	4				
MS822DE	4064902014L9V	1				
MS822DE	4064903014PNV	1				
MX421ADE	701791630B1DK	0				
MX522ADHE	7017904308P7H	1	0%	12		12
MX711dhe	74633699031YB	7				
MX711dhe	74635C6602GF0	4			Yes	
MX711DHE	74636C6600X3C	3			Yes	
MX711dhe	74635C6602GDK	4	11%	Yes	2861	2861
MX711dhe	74635C6602GCW	4	74%	Yes	18414	18414
MX711DHE	74637C66009Z2	3				
MX722ADHE	746481102002H	1	16%	Yes	15669	15669

<< More data continued on Next Page >>

30Q445 - Jan 2020 - Page 3

Printer Details - Page 2

Model	Serial Number	Age in Years	Utilization	ATS Printer	Avg Mono Pages	Avg Color Pages	Avg Monthly Volume
T640n	792X5VG	11					
T650n	795GNCV	7					
T650n	795GNCW	7					
T650n	795451P	8					

T650n	79439FF	10				
T650n	794V00D	8				
T650n	794YN6Z	8	1%	162		162
T650n	794M36W	9				
T650n	794V547	8	Yes			
T650n	793T17K	9				
T650n	793VRKY	10				
T650n	793T186	9				
X544n	94F76DR	8	Yes			
X656de	40634C6600M2N	4				
X734de	942140W	10				
X738de	9435YZC	8				
X738de	9434TTB	8				
X748de	75260194G17W5	4				
X748de	7526439440M6T	4	11%	59	1018	1077
0	0	0				
0	0	0				
0	0	0				
0	0	0				
0	0	0				
0	0	0				
0	0	0				
0	0	0				
0	0	0				
0	0	0				
0	0	0				
0	0	0				
0	0	0				
0	0	0				
0	0	0				
0	0	0				
0	0	0				
0	0	0				
0	0	0				
0	0	0				
0	0	0				
0	0	0				
0	0	0				
0	0	0				
0	0	0				
0	0	0				
0	0	0				
0	0	0				
0	0	0				
0	0	0				
0	0	0				
0	0	0				
0	0	0				
0	0	0				
0	0	0				
0	0	0				
0	0	0				

<< End of Data >>

For more information regarding this snapshot, please contact your Lexmark team

Lexmark Team

Title	Name	E-Mail	Phone
Client Executive	Mindy Maher	mmaher@lexmark.com	212-880-2837
Site Operations	Mark Ennis	mennis@lexmark.com	908-210-3030
Systems Engineer	TBD	TBD	TBD

**CDW Team
CDW Sales Department – 800-705-4239**

Title	Name	E-Mail	Phone
Sales Manager	John Skidmore	john.skidmore@cdwg.com	(866) 687-3187
Sales Operations	Jon Gray	jongray@cdw.com	(203) 851-7133
		NYCDOE@cdwg.com	