

Please find enclosed a snap shot of your school's printer environment. The printer breakdown and data encompasses only the printers we can see on your network. You may have additional printers that are locally connected (e.g. USB attached), but those are not included in this breakdown.

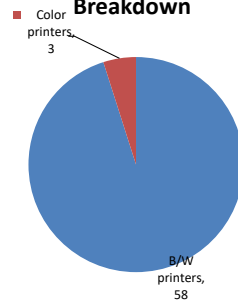
Chart 1 – School Printer Breakdown

This provides your school's enrollment, along with the number of printers, including the distribution between B/W and color printers.

Information Technology High School

Enrollment	991
B/W printers	58
Color printers	3
Total printers	61

Color/Mono Device Breakdown



From the list provided on page 3 are all of your printers represented? If not, how many are missing Providing Lexmark the asset data that is missing will allow us to give you a more accurate picture of your printer environment.

Do you know how many printers you have in your main office, compared to the number of people who sit in the main office? Reducing the number of devices and using the most efficient models in the right locations can help your school save money.

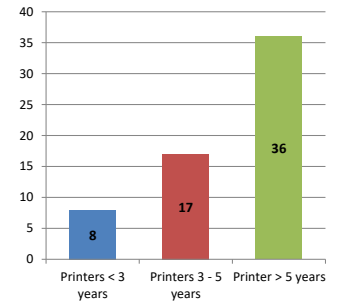
Chart 2 – Printer Age Statistics

Here we show the average age of your printers and show the distribution among 3 age categories; under 3 years old, 3-5 years old and over 5 years old.

Printer Age Statistics

Average Age (years)	6
Printers < 3 years	8
Printers 3 - 5 years	17
Printer > 5 years	36

Printer Age Statistics



The age of your printer fleet plays a large role in your annual printer maintenance and toner cost. The DOE only supports printers 6 years and younger.

Once the warranty expires and the age of your device exceeds 6 years, maintenance and repairs become very costly.

New printers have higher toner yields than older printers, resulting in lower cost per page which saves money.

Newer printers are Energy Star compliant and have advanced eco settings which help reduce energy usage and saves money.

Glossary

B/W - Black and White Printing Only

Color - Color or Black and White Printing

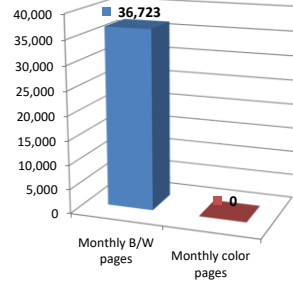
Duplex - Printing on both sides of the paper.

Simplex - Single Sided Printing

Chart 3 – Volume of Pages Printed

This provides your printed page volumes for the previous month for both B/W and color print jobs. In addition, a utilization percentage is calculated by comparing your print volume for each printer to the maximum monthly volume capacity for that printer model.

Color/Mono Pages Printed



Volume of pages printed

Monthly B/W pages	36,723
Monthly color pages	0
Total monthly pages	36,723
Color page %	0%
Utilization %	3%

[Do you know if all of your printers are being used and how much?](#)

Knowing where volumes are created helps identify areas for consolidation and helps you select the most efficient printers for replacement.

[Are you printing a large amount of color volume?](#)

Controlling color volume, which typically costs more than black and white, can help your school save money.

Chart 4 – Duplex Breakdown

This section shows the percentage of duplexed (double-sided) pages printed along with your duplex opportunity. Duplex opportunity is the total number of pages that could be printed duplex and does not include single page documents. Keep in mind, only the newer printers report duplex statistics. The duplex opportunity shows the prior month's print volume, from the printers with duplex statistics, that could have been duplexed.

Duplex Vs. Simplex



Duplex breakdown

Duplex opportunity	Info Not Available
Duplex	0%

[Did you know that your printers are able to print on both back and front of the page?](#)

Increasing your school's use of double sided printing helps reduce your environmental impact and will help your school save money.

[The average duplex rate for the NYC DOE is 14%](#)

A modest improvement in duplex of 10% would reduce the carbon footprint by over 435,000 pounds of CO₂ per year, and save the DOE over \$78,000 in paper costs annually.

[Lexmark printers 6 years and younger all have duplex capability. The following duplex initiatives can reduce paper consumption and save money:](#)

Setting duplex as your default setting on your printer
Educating end users about the benefit of duplex printing.

[For more information on how the DOE is focused on Sustainability check: <http://schools.nyc.gov/community/facilities/sustainability/about/>](#)

Actions you can take to Save your School Money

Use highest yield toner whenever possible to lower the cost per page.
 Consider replacing printers over 6 years old to optimize eco-friendly printer environment.
 Duplex multiple page documents when possible to reduce paper usage.

Printer details

Model	Serial Number	Age in Years	Utilization	ATS Printer	Avg Mono Pages	Avg Color Pages	Avg Monthly Volume
C935dn	0254833	8					

C935dttn	0254897	8			
C950de Low Volt NA LAD	5058100208619	5			
M810de Low Volt	4063369904624	7			
MS810de	40634C6600TTB	5			
MS810de	40634C6600TNP	5	0%	33	33
MS810de	40634C6600TW1	5	6%	1155	1155
MS810de	406336990462R	7	1%	263	263
MS810de	40635C6604LT9	4	1%	153	153
MS810de	40634C6600TTH	5	1%	136	136
MS810de	4063369906CD7	7	2%	405	405
MS810de	40633699045XK	7			
MS810de	40634C6600TW2	5	4%	770	770
MS810de	40634C6600TR9	5			
MS810de	40634C6600TNN	5	26%	5220	5220
MS810de	40634C6600TT2	5	3%	640	640
MS810de	40634C6600TRD	5			
MS810de	40634C6600TR6	5	0%	12	12
MS810de	40634C6600TT5	5			
MS810de	40634C6600TW5	5	20%	3942	3942
MS810de	406336990D916	6	18%	3520	3520
MS810de	406347990K0Y5	5	8%	1633	1633
MS810de	4063369906CDB	7	1%	290	290
MS810de	406347990M0HM	5	2%	373	373
MS810de	4063369906CCW	7			
MS810de	4063369906CCV	7	0%	84	84
MS810de	40634C6600TT6	5	1%	103	103
MS810DE	40637C660044V	3	3%	597	597
MS810de	406336990DTN9	5	3%	698	698
MS810DE	40638D6600HCY	2	1%	173	173
MS810de	406347990KN34	6			
MS810de	406347990K0W9	5	2%	475	475
MS810de	406347990KN35	6			
MS810DE	40638D660173L	2	1%	127	127
MS822DE	4064902014L70	1			
MS822DE	4064902014LOV	1			
MS822DE	4064902014LOY	1			
MS822DE	4064902014L07	1	2%	893	893
MS822DE	4064902014L1B	1			
MS822DE	4064902014L1C	1	1%	390	390
MX511dhe	701545HH0MNF2	5			
MX711dhe	7463479906BX8	4	25%	6169	6169
MX711dhe	7463479906F8Z	4			
T640n	792Y65D	11	3%	442	442
T640n	792Y638	11			
T644	7932LMT	11	0%	87	87
T644n	792XPB6	11	1%	216	216
T644n	79333B9	11	5%	1150	1150
T650dn Low Volt CA US	7954556	8			
T650n	795454V	8	7%	1415	1415
T650n	793YXPH	10			
T650n	795454X	8			
T650n	794V55N	8	2%	443	443
T650n	794V5D9	8	4%	730	730
T650n	793RWVB	10	2%	346	346
T650n	793RWWM	10	6%	1279	1279
T650n	794V5D2	8	0%	61	61
T650n	794V5D6	8	2%	338	338
T650n	794LOR2	9			
T650n	793T184	9	9%	1818	1818
T650n	794BHLR	9	1%	144	144

<< End of Data >>

30Q502 - Jan 2020 - Page 3

For more information regarding this snapshot, please contact your Lexmark team

Lexmark Team

CDW Team
CDW Sales Department – 800-705-4239

Title	Name	E-Mail	Phone
Client Executive	Mindy Maher	mmaher@lexmark.com	212-880-2837
Site Operations	Mark Ennis	mennis@lexmark.com	908-210-3030
Systems Engineer	TBD	TBD	TBD

Title	Name	E-Mail	Phone
Sales Manager	John Skidmore	john.skidmore@cdwg.com	(866) 687-3187
Sales Operations	Jon Gray	jongray@cdw.com	(203) 851-7133
		NYCDOE@cdwg.com	