

Please find enclosed a snap shot of your school's printer environment. The printer breakdown and data encompasses only the printers we can see on your network. You may have additional printers that are locally connected (e.g. USB attached), but those are not included in this breakdown.

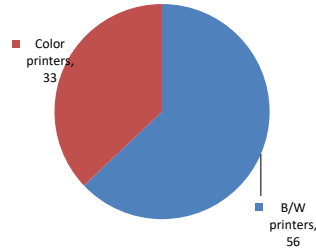
Chart 1 – School Printer Breakdown

This provides your school's enrollment, along with the number of printers, including the distribution between B/W and color printers.

Robert E. Peary School

Enrollment	565
B/W printers	56
Color printers	33
Total printers	89

Color/Mono Device Breakdown



From the list provided on page 3 are all of your printers represented? If not, how many are missing Providing Lexmark the asset data that is missing will allow us to give you a more accurate picture of your printer environment.

Do you know how many printers you have in your main office, compared to the number of people who sit in the main office?

Reducing the number of devices and using the most efficient models in the right locations can help your school save money.

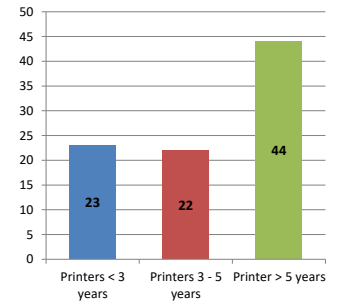
Chart 2 – Printer Age Statistics

Here we show the average age of your printers and show the distribution among 3 age categories; under 3 years old, 3-5 years old and over 5 years old.

Printer Age Statistics

Average Age (years)	5
Printers < 3 years	23
Printers 3 - 5 years	22
Printer > 5 years	44

Printer Age Statistics



The age of your printer fleet plays a large role in your annual printer maintenance and toner cost. The DOE only supports printers 6 years and younger.

Once the warranty expires and the age of your device exceeds 6 years, maintenance and repairs become very costly.

New printers have higher toner yields than older printers, resulting in lower cost per page which saves money.

Newer printers are Energy Star compliant and have advanced eco settings which help reduce energy usage and saves money.

Glossary

B/W - Black and White Printing Only

Color - Color or Black and White Printing

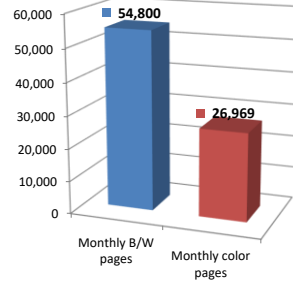
Duplex - Printing on both sides of the paper.

Simplex - Single Sided Printing

Chart 3 – Volume of Pages Printed

This provides your printed page volumes for the previous month for both B/W and color print jobs. In addition, a utilization percentage is calculated by comparing your print volume for each printer to the maximum monthly volume capacity for that printer model.

Color/Mono Pages Printed



Volume of pages printed

Monthly B/W pages	54,800
Monthly color pages	26,969
Total monthly pages	81,769
Color page %	33%
Utilization %	7%

[Do you know if all of your printers are being used and how much?](#)

Knowing where volumes are created helps identify areas for consolidation and helps you select the most efficient printers for replacement.

[Are you printing a large amount of color volume?](#)

Controlling color volume, which typically costs more than black and white, can help your school save money.

Chart 4 – Duplex Breakdown

This section shows the percentage of duplexed (double-sided) pages printed along with your duplex opportunity. Duplex opportunity is the total number of pages that could be printed duplex and does not include single page documents. Keep in mind, only the newer printers report duplex statistics. The duplex opportunity shows the prior month's print volume, from the printers with duplex statistics, that could have been duplexed.

Duplex Vs. Simplex



Duplex breakdown

Duplex opportunity	Info Not Available
Duplex	0%

[Did you know that your printers are able to print on both back and front of the page?](#)

Increasing your school's use of double sided printing helps reduce your environmental impact and will help your school save money.

[The average duplex rate for the NYC DOE is 14%](#)

A modest improvement in duplex of 10% would reduce the carbon footprint by over 435,000 pounds of CO₂ per year, and save the DOE over \$78,000 in paper costs annually.

[Lexmark printers 6 years and younger all have duplex capability. The following duplex initiatives can reduce paper consumption and save money:](#)

Setting duplex as your default setting on your printer

Educating end users about the benefit of duplex printing.

[For more information on how the DOE is focused on Sustainability check:](#)

<http://schools.nyc.gov/community/facilities/sustainability/about/>

Actions you can take to Save your School Money

- Use highest yield toner whenever possible to lower the cost per page.
- Consider replacing printers over 6 years old to optimize eco-friendly printer environment.
- Duplex multiple page documents when possible to reduce paper usage.

Printer details

Model	Serial Number	Age in Years	Utilization	ATS Printer	Avg Mono Pages	Avg Color Pages	Avg Monthly Volume
C544dn	9464TFD	9	8%		84	141	225

C544dn	9464TF2	9	10%	152	157	309
C544dn	9464TFC	9				
C544dn	9464TFF	9				
C544dn	946D2G0	7				
C544dn	9458VR8	8				
C544dn	9458VWN	8	15%	92	348	440
C748de	5026099424F7B	5				
C748de	5026059431BPC	7				
CS510de	502726946BTPK	4				
CS510DE	502702946TRG6	2				
CS510DE	502702946TRDZ	2	5%	39	295	334
CS510DE	502720945M805	3	10%	157	542	699
CS510de	5027059458Z61	5	12%	75	775	850
CS510de	5027019458H11	5	3%	46	139	185
CS510de	5027059458Z2F	5				
CS510de	5027059458Z65	5				
CS510de	5027059458Z30	5	3%	79	124	203
CS510de	5027159461YX4	6				
CS510DE	502720945M80F	3	1%	3	95	98
CS510de	502726946BTPN	4	14%	409	594	1003
CS510de	502728946BX9W	4				
CS510DE	502702946TRG3	2	10%	51	669	720
CS510DE	502720945M803	3				
CS510de	5027219455WVX	5	8%	112	481	593
CS510de	5027219455X28	5	12%	332	501	833
CS510DE	502720945M801	3	8%	244	337	581
CS510de	5027019458GY6	5				
CS510DE	502702946TRGC	2				
CS725DE	50287170116TB	3	6%	121	1021	1142
CS725DE	5028811012GMW	2	122%	4371	20112	24483
CS725DE	5028811012GN7	2				
CX510DE	752728946N177	2	13%	285	638	923
E460dn	72HW26Y	7				
E460dn	72HMWDM	8				
E460dn	72HW88G	7	3%	305		305
E460dn	72HMWD1	8	3%	296		296
E460dn	72HW88C	7	6%	559		559
E460dn	72HW266	7				
E460dn	72HW2D8	7				
MS510dn	451444HH1G30X	5	2%	273		273
MS510DN	45147GHH3RCPF	3	3%	383		383
MS510dn	451420HH03KMG	7	9%	1269		1269
MS510dn	451444HH1G3L4	5	4%	606		606
MS510DN	45148PHH4P2XH	2	5%	767		767
MS510dn	451457HH2BHW1	5	6%	799		799
MS510dn	451457HH2BHVZ	5	1%	153		153
MS510dn	451420HH03K6V	7	7%	998		998
MS510dn	451457HH2BHX4	5	5%	674		674
MS510dn	451457HH2BHX0	5	2%	301		301
MS510DN	45148PHH4P2XB	2	3%	407		407
MS510dn	451444HH1G3L1	5	8%	1059		1059
MS510DN	45147GHH3RCP3	3	1%	194		194
MS510dn	451420HH03KML	7	6%	873		873
MS510dn	451444HH1G3L0	5	0%	26		26
MS510dn	451420HH03KK1	7	20%	2866		2866
MS510dn	451432HH0TFXH	6	4%	596		596
MS510dn	451432HH0TFX4	6	7%	1046		1046
MS510dn	451420HH03KH3	7	2%	243		243
MS510dn	451420HH03KGM	7				
MS510dn	45146PHH2YMHV	4				
MS510dn	451457HH2H04Y	4	5%	710		710
MS510DN	45147GHH3RCNX	3				
MS510dn	451433HH119NT	6	3%	379		379
MS510DN	45147GHH3RCP7	3				

<< More data continued on Next Page >>

75Q075 - Jan 2020 - Page 3

Printer Details - Page 2

Model	Serial Number	Age in Years	Utilization	ATS Printer	Avg Mono Pages	Avg Color Pages	Avg Monthly Volume
MS510DN	45148PHH4P2XF	2					
MS510DN	45148PHH4P2XR	2	4%		495		495
MS810de	4063369904DTF	7	14%		2756		2756
MS810de	4063369904DTR	7	79%		15715		15715

MS810de	4063369904DTZ	7				
MS810de	4063369904DTG	7	6%		1286	1286
MS810DE	40638D6600HD0	2				
MS810DE	40638D6600HCG	2	3%		578	578
MX711DHE	74637C66011CD	3	4%		1098	1098
MX711dhe	74635C6600NPD	4	21%	Yes	5241	5241
T650dn	79544YM	8				
T650dn Low Volt CA US	7954538	8				
T650n	794FPZD	9	3%	Yes	545	545
T650n	794FXWP	9	6%		1131	1131
T650n	794FPYR	9	7%		1384	1384
T650n	795453F	8				
T650n	795F9T5	7				
T650n	795454T	8				
T650n	79544Y9	8				
X656de	5027059458Z63	5	2%		681	681
X656de	5027059458Z33	5	2%		595	595
X656de	5027059458Z5Z	5	3%		861	861
X656de	5027059458Z4G	5				
X656de	451457HH2BHVN	5				
0	0	0				
0	0	0				
0	0	0				
0	0	0				
0	0	0				
0	0	0				
0	0	0				
0	0	0				
0	0	0				
0	0	0				
0	0	0				
0	0	0				
0	0	0				
0	0	0				
0	0	0				
0	0	0				
0	0	0				
0	0	0				
0	0	0				
0	0	0				
0	0	0				
0	0	0				

<< End of Data >>

For more information regarding this snapshot, please contact your Lexmark team

Lexmark Team			
Title	Name	E-Mail	Phone
Client Executive	Mindy Maher	mmaher@lexmark.com	212-880-2837
Site Operations	Mark Ennis	mennis@lexmark.com	908-210-3030
Systems Engineer	TBD	TBD	TBD

CDW Team CDW Sales Department – 800-705-4239			
Title	Name	E-Mail	Phone
Sales Manager	John Skidmore	john.skidmore@cdwg.com	(866) 687-3187
Sales Operations	Jon Gray	jongray@cdw.com	(203) 851-7133
		NYCDOE@cdwg.com	