

Please find enclosed a snap shot of your school's printer environment. The printer breakdown and data encompasses only the printers we can see on your network. You may have additional printers that are locally connected (e.g. USB attached), but those are not included in this breakdown.

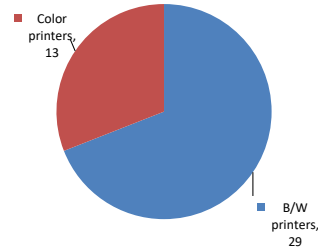
Chart 1 – School Printer Breakdown

This provides your school's enrollment, along with the number of printers, including the distribution between B/W and color printers.

P.S. 8 Shirlee Solomon

Enrollment	588
B/W printers	29
Color printers	13
Total printers	42

Color/Mono Device Breakdown



From the list provided on page 3 are all of your printers represented? If not, how many are missing Providing Lexmark the asset data that is missing will allow us to give you a more accurate picture of your printer environment.

Do you know how many printers you have in your main office, compared to the number of people who sit in the main office?

Reducing the number of devices and using the most efficient models in the right locations can help your school save money.

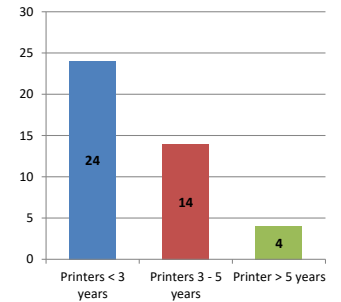
Chart 2 – Printer Age Statistics

Here we show the average age of your printers and show the distribution among 3 age categories; under 3 years old, 3-5 years old and over 5 years old.

Printer Age Statistics

Average Age (years)	3
Printers < 3 years	24
Printers 3 - 5 years	14
Printer > 5 years	4

Printer Age Statistics



The age of your printer fleet plays a large role in your annual printer maintenance and toner cost. The DOE only supports printers 6 years and younger.

Once the warranty expires and the age of your device exceeds 6 years, maintenance and repairs become very costly.

New printers have higher toner yields than older printers, resulting in lower cost per page which saves money.

Newer printers are Energy Star compliant and have advanced eco settings which help reduce energy usage and saves money.

Glossary

B/W - Black and White Printing Only

Color - Color or Black and White Printing

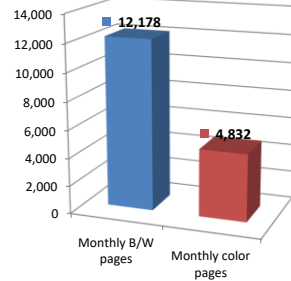
Duplex - Printing on both sides of the paper.

Simplex - Single Sided Printing

Chart 3 – Volume of Pages Printed

This provides your printed page volumes for the previous month for both B/W and color print jobs. In addition, a utilization percentage is calculated by comparing your print volume for each printer to the maximum monthly volume capacity for that printer model.

Color/Mono Pages Printed



Volume of pages printed

Monthly B/W pages	12,178
Monthly color pages	4,832
Total monthly pages	17,010
Color page %	28%
Utilization %	2%

Do you know if all of your printers are being used and how much?

Knowing where volumes are created helps identify areas for consolidation and helps you select the most efficient printers for replacement.

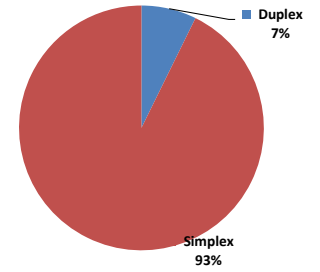
Are you printing a large amount of color volume?

Controlling color volume, which typically costs more than black and white, can help your school save money.

Chart 4 – Duplex Breakdown

This section shows the percentage of duplexed (double-sided) pages printed along with your duplex opportunity. Duplex opportunity is the total number of pages that could be printed duplex and does not include single page documents. Keep in mind, only the newer printers report duplex statistics. The duplex opportunity shows the prior month's print volume, from the printers with duplex statistics, that could have been duplexed.

Duplex Vs. Simplex



Duplex breakdown

Duplex opportunity	2,046
Duplex	7%

Did you know that your printers are able to print on both back and front of the page?

Increasing your school's use of double sided printing helps reduce your environmental impact and will help your school save money.

The average duplex rate for the NYC DOE is 14%

A modest improvement in duplex of 10% would reduce the carbon footprint by over 435,000 pounds of CO₂ per year, and save the DOE over \$78,000 in paper costs annually.

Lexmark printers 6 years and younger all have duplex capability. The following duplex initiatives can reduce paper consumption and save money:

Setting duplex as your default setting on your printer

Educating end users about the benefit of duplex printing.

For more information on how the DOE is focused on Sustainability check:

<http://schools.nyc.gov/community/facilities/sustainability/about/>

Actions you can take to Save your School Money

- Use highest yield toner whenever possible to lower the cost per page.
- Consider replacing printers over 6 years old to optimize eco-friendly printer environment.
- Duplex multiple page documents when possible to reduce paper usage.

Printer details

Model	Serial Number	Age in Years	Utilization	ATS Printer	Avg Mono Pages	Avg Color Pages	Avg Monthly Volume
CS510de	5027039464N59	6	10%		167	519	686

CS510de	502704946D1PK	4				
CS510de	502704946D1PT	4	30%		1364	701
CS510de	502704946D1VB	4	19%		657	680
CS510de	502704946D1WD	4				1337
CS622DE	5029935034M3H	0				
CS622DE	5029935034M37	0				
CS725DE	5028812012H59	1	10%		751	1259
CS725DE	5028739011WKN	1				2010
CS725DE	5028813012HWH	1	11%		856	1440
CS725DE	5028823012V06	1				2296
CS725DE	5028823012V09	1	4%		567	233
CS725DE	50289210F3ZH7	0				800
E332n	7210CGX	4				
MS510DN	45146PHH3L0NN	3				
MS510DN	45146PHH3L0RV	3				
MS510DN	45147GHH4HNMG	2				
MS510DN	45147GHH4HNMX	2	4%		589	589
MS510DN	45146PHH3K8GT	3	2%		347	347
MS510DN	752703946BTCR	4				
MS510DN	45146PHH3L0PD	3				
MS510DN	45146PHH3L0PG	3				
MS510DN	45146PHH3L0PC	3	8%		1179	1179
MS510DN	45146PHH3L0PX	3	15%		2133	2133
MS510DN	45146PHH3L0M6	3				
MS510DN	45146PHH3L0NR	3	6%		815	815
MS510DN	45146PHH3DGYR	3				
MS510DN	45146PHH3K8GK	3				
MS510DN	45146PHH3K8HB	3				
MS510DN	45146PHH3K8HK	3				
MS510DN	45147GHH4HNND	2				
MS510DN	45147GHH4DFFX	2				
MS510DN	45147GHH4DFF8	2				
MS510DN	45147GHH4H2CB	2				
MS621DN	46009333107W5	0				
MS810	5027049464R7C	6				
MS810	50274694649B0	6				
MS810DE	40636C66046RD	3	8%	Yes	1526	1526
MS810DE	40636C66046R7	3				
MX711DHE	74638D6600440	2	1%		216	216
X646dte	79204RV	12		Yes		
X656de	79G2V2C	4	3%	Yes	1011	1011

<< End of Data >>

For more information regarding this snapshot, please contact your Lexmark team

Lexmark Team

CDW Team
CDW Sales Department – 800-705-4239

Title	Name	E-Mail	Phone
Client Executive	Mindy Maher	mmaher@lexmark.com	212-880-2837
Site Operations	Mark Ennis	mennis@lexmark.com	908-210-3030
Systems Engineer	TBD	TBD	TBD

Title	Name	E-Mail	Phone
Sales Manager	John Skidmore	john.skidmore@cdwg.com	(866) 687-3187
Sales Operations	Jon Gray	jongray@cdw.com	(203) 851-7133
		NYCDOE@cdwg.com	