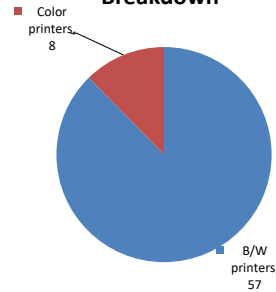


Please find enclosed a snap shot of your school's printer environment. The printer breakdown and data encompasses only the printers we can see on your network. You may have additional printers that are locally connected (e.g. USB attached), but those are not included in this breakdown.

Chart 1 – School Printer Breakdown

This provides your school's enrollment, along with the number of printers, including the distribution between B/W and color printers.

Color/Mono Device Breakdown



Tottenville High School

Enrollment	3700
B/W printers	57
Color printers	8
Total printers	65

From the list provided on page 3 are all of your printers represented? If not, how many are missing Providing Lexmark the asset data that is missing will allow us to give you a more accurate picture of your printer environment.

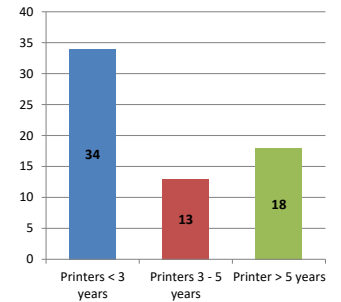
Do you know how many printers you have in your main office, compared to the number of people who sit in the main office?

Reducing the number of devices and using the most efficient models in the right locations can help your school save money.

Chart 2 – Printer Age Statistics

Here we show the average age of your printers and show the distribution among 3 age categories; under 3 years old, 3-5 years old and over 5 years old.

Printer Age Statistics



Printer Age Statistics

Average Age (years)	4
Printers < 3 years	34
Printers 3 - 5 years	13
Printer > 5 years	18

The age of your printer fleet plays a large role in your annual printer maintenance and toner cost. The DOE only supports printers 6 years and younger.

Once the warranty expires and the age of your device exceeds 6 years, maintenance and repairs become very costly.

New printers have higher toner yields than older printers, resulting in lower cost per page which saves money.

Newer printers are Energy Star compliant and have advanced eco settings which help reduce energy usage and saves money.

Glossary

B/W - Black and White Printing Only

Color - Color or Black and White Printing

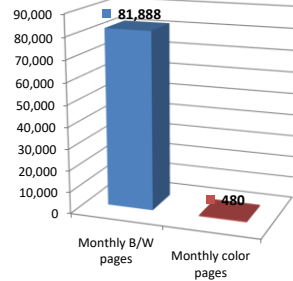
Duplex - Printing on both sides of the paper.

Simplex - Single Sided Printing

Chart 3 – Volume of Pages Printed

This provides your printed page volumes for the previous month for both B/W and color print jobs. In addition, a utilization percentage is calculated by comparing your print volume for each printer to the maximum monthly volume capacity for that printer model.

Color/Mono Pages Printed



Volume of pages printed

Monthly B/W pages	81,888
Monthly color pages	480
Total monthly pages	82,368
Color page %	1%
Utilization %	7%

[Do you know if all of your printers are being used and how much?](#)

Knowing where volumes are created helps identify areas for consolidation and helps you select the most efficient printers for replacement.

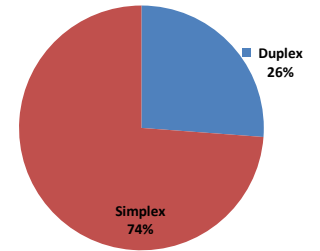
[Are you printing a large amount of color volume?](#)

Controlling color volume, which typically costs more than black and white, can help your school save money.

Chart 4 – Duplex Breakdown

This section shows the percentage of duplexed (double-sided) pages printed along with your duplex opportunity. Duplex opportunity is the total number of pages that could be printed duplex and does not include single page documents. Keep in mind, only the newer printers report duplex statistics. The duplex opportunity shows the prior month's print volume, from the printers with duplex statistics, that could have been duplexed.

Duplex Vs. Simplex



Duplex breakdown

Duplex opportunity	16,572
Duplex	26%

[Did you know that your printers are able to print on both back and front of the page?](#)

Increasing your school's use of double sided printing helps reduce your environmental impact and will help your school save money.

[The average duplex rate for the NYC DOE is 14%](#)

A modest improvement in duplex of 10% would reduce the carbon footprint by over 435,000 pounds of CO₂ per year, and save the DOE over \$78,000 in paper costs annually.

[Lexmark printers 6 years and younger all have duplex capability. The following duplex initiatives can reduce paper consumption and save money:](#)

Setting duplex as your default setting on your printer

Educating end users about the benefit of duplex printing.

[For more information on how the DOE is focused on Sustainability check:](#)

<http://schools.nyc.gov/community/facilities/sustainability/about/>

Actions you can take to Save your School Money

- Use highest yield toner whenever possible to lower the cost per page.
- Consider replacing printers over 6 years old to optimize eco-friendly printer environment.
- Duplex multiple page documents when possible to reduce paper usage.

Printer details

Model	Serial Number	Age in Years	Utilization	ATS Printer	Avg Mono Pages	Avg Color Pages	Avg Monthly Volume
CS622DE	5029829040G28	1					

CS622DE	50299010417V7	1					
CS622DE	50299150325F0	0					
CX510de	75271294681TW	4					
CX510DE	752729946DN4K	3					
CX510DE	752748946GBXV	3					
LaserjetP2055	CNB9029892	10					
LaserjetP2055	CNB9030844	10	30%	912	912		
LaserjetP2055	CNB9029950	10					
MS510dn	451455HH26XMT	5	2%	341	341		
MS510dn	451455HH26XPH	5	5%	767	767		
MS510dn	451432HH0Y351	6	23%	3195	3195		
MS510dn	451455HH26XPR	5	18%	2470	2470		
MS510dn	451420HH0463H	7					
MS510dn	451456HH29XFL	4	5%	756	756		
MS510dn	451456HH29XC5	4	4%	490	490		
MS510dn	451432HH0XZGL	6	12%	1649	1649		
MS510dn	451445HH21D85	5					
MS510DN	45147GHH45R3C	2					
MS510dn	451432HH0TFPN	6	3%	456	456		
MS510dn	451420HH0463R	7	2%	286	286		
MS510DN	45147GHH45RFH	2					
MS510DN	45147GHH45R35	2					
MS510DN	45147GHH42Z6M	2	12%	1654	1654		
MS510DN	45147GHH42Z8P	2	1%	186	186		
MS510DN	45147GHH4HNMM	2					
MS510DN	45147GHH4D7MZ	2					
MS510DN	45147GHH4D7ND	2					
MS510DN	45147GHH4D7N4	2					
MS510DN	45147GHH4D7N7	2					
MS510DN	45147GHH4H1YY	2					
MS510DN	45147GHH4H1Z1	2	24%	3291	3291		
MS621DN	4600817003B0L	1	30%	6002	6002		
MS621DN	4600817003B1C	1	54%	10877	10877		
MS621DN	4600817003B15	1	3%	673	673		
MS621DN	4600817003B10	1					
MS621DN	460090200LVK3	1					
MS621DN	460090200LVK5	1					
MS621DN	460090200LVLM	1					
MS621DN	460090200LVNM	1	0%	82	82		
MS621DN	460090200LVNX	1					
MS621DN	460090200LWGG	1					
MS621DN	460090200LVLB	1					
MS621DN	460090200LVN7	1	40%	7987	7987		
MS621DN	460090200LVN8	1					
MS621DN	460090200LWGD	1	53%	10597	10597		
MS621DN	460090200LWGG9	1					
MS621DN	460090200LWHT	1					
MS621DN	460090530NF8R	1	3%	684	684		
MS810	45146PHH37V01	3	1%	454	454		
MS810de	40635C66033MD	4					
MS810de	40635C6606MKD	4	66%	Yes	13297	13297	
MS822DE	4064912015HY1	0					
MX722ADHE	7464943022XBD	0					
T630n	9925BKX	15					
T640n	791610C	13					
T644	7905XLG	14	2%	501	501		
T644n	791XN1N	13	7%	Yes	1827	1827	
T644n	79149VW	13					
T650n	793YY45	10	26%	5156	5156		
T650n	794V54F	8	25%	Yes	5072	5072	
X656de	451455HH26XR1	5	1%	213	213		
X656de	CNB9029885	13	2%	610	610		
X748de	75262994408VN	7					
X748de	7526509441ZNR	5	19%	Yes	1403	480	1883

<< End of Data >>

31R455 - Jan 2020 - Page 3

For more information regarding this snapshot, please contact your Lexmark team

Lexmark Team

CDW Team
CDW Sales Department – 800-705-4239

Title	Name	E-Mail	Phone
Client Executive	Mindy Maher	mmaher@lexmark.com	212-880-2837
Site Operations	Mark Ennis	mennis@lexmark.com	908-210-3030
Systems Engineer	TBD	TBD	TBD

Title	Name	E-Mail	Phone
Sales Manager	John Skidmore	john.skidmore@cdwg.com	(866) 687-3187
Sales Operations	Jon Gray	jongray@cdw.com	(203) 851-7133
		NYCDOE@cdwg.com	