

Please find enclosed a snap shot of your school's printer environment. The printer breakdown and data encompasses only the printers we can see on your network. You may have additional printers that are locally connected (e.g. USB attached), but those are not included in this breakdown.

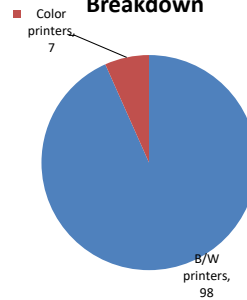
**Chart 1 – School Printer Breakdown**

This provides your school's enrollment, along with the number of printers, including the distribution between B/W and color printers.

**Staten Island School Of Civic Leadership**

Enrollment	876
B/W printers	98
Color printers	7
Total printers	105

**Color/Mono Device Breakdown**



From the list provided on page 3 are all of your printers represented? If not, how many are missing Providing Lexmark the asset data that is missing will allow us to give you a more accurate picture of your printer environment.

Do you know how many printers you have in your main office, compared to the number of people who sit in the main office?

Reducing the number of devices and using the most efficient models in the right locations can help your school save money.

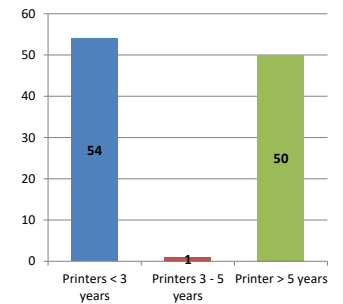
**Chart 2 – Printer Age Statistics**

Here we show the average age of your printers and show the distribution among 3 age categories; under 3 years old, 3-5 years old and over 5 years old.

**Printer Age Statistics**

Average Age (years)	6
Printers < 3 years	54
Printers 3 - 5 years	1
Printer > 5 years	50

**Printer Age Statistics**



The age of your printer fleet plays a large role in your annual printer maintenance and toner cost. The DOE only supports printers 6 years and younger.

Once the warranty expires and the age of your device exceeds 6 years, maintenance and repairs become very costly.

New printers have higher toner yields than older printers, resulting in lower cost per page which saves money.

Newer printers are Energy Star compliant and have advanced eco settings which help reduce energy usage and saves money.

**Glossary**

B/W - Black and White Printing Only

Color - Color or Black and White Printing

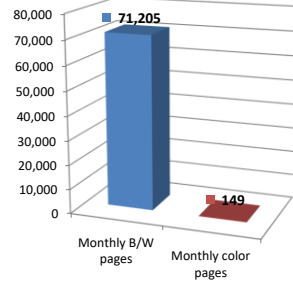
Duplex - Printing on both sides of the paper.

Simplex - Single Sided Printing

### Chart 3 – Volume of Pages Printed

This provides your printed page volumes for the previous month for both B/W and color print jobs. In addition, a utilization percentage is calculated by comparing your print volume for each printer to the maximum monthly volume capacity for that printer model.

Color/Mono Pages Printed



#### Volume of pages printed

Monthly B/W pages	71,205
Monthly color pages	149
Total monthly pages	71,354
Color page %	0%
Utilization %	5%

[Do you know if all of your printers are being used and how much?](#)

**Knowing where volumes are created helps identify areas for consolidation and helps you select the most efficient printers for replacement.**

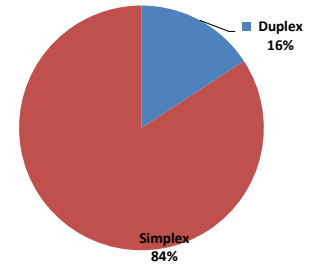
[Are you printing a large amount of color volume?](#)

**Controlling color volume, which typically costs more than black and white, can help your school save money.**

### Chart 4 – Duplex Breakdown

This section shows the percentage of duplexed (double-sided) pages printed along with your duplex opportunity. Duplex opportunity is the total number of pages that could be printed duplex and does not include single page documents. Keep in mind, only the newer printers report duplex statistics. The duplex opportunity shows the prior month's print volume, from the printers with duplex statistics, that could have been duplexed.

Duplex Vs. Simplex



#### Duplex breakdown

Duplex opportunity	14,622
Duplex	16%

[Did you know that your printers are able to print on both back and front of the page?](#)

**Increasing your school's use of double sided printing helps reduce your environmental impact and will help your school save money.**

[The average duplex rate for the NYC DOE is 14%](#)

**A modest improvement in duplex of 10% would reduce the carbon footprint by over 435,000 pounds of CO<sub>2</sub> per year, and save the DOE over \$78,000 in paper costs annually.**

[Lexmark printers 6 years and younger all have duplex capability. The following duplex initiatives can reduce paper consumption and save money:](#)

**Setting duplex as your default setting on your printer**

**Educating end users about the benefit of duplex printing.**

[For more information on how the DOE is focused on Sustainability check:](#)

<http://schools.nyc.gov/community/facilities/sustainability/about/>

## Actions you can take to Save your School Money

- Use highest yield toner whenever possible to lower the cost per page.
- Consider replacing printers over 6 years old to optimize eco-friendly printer environment.
- Duplex multiple page documents when possible to reduce paper usage.

#### Printer details

Model	Serial Number	Age in Years	Utilization	ATS Printer	Avg Mono Pages	Avg Color Pages	Avg Monthly Volume
C544dn	9812BT2	11					

C544dn	9812BK2	11	10%		149	149	298
CS510de	5027459450BYV	7	3%	Yes	183		183
CS510de	5027039464N65	6		Yes			
CS725DE	50288510F3KX8	1					
CS725DE	50288510F3LOR	1					
E360dn	72M6072	11					
E360dn	72M60DG	11					
E360dn	72M60DR	11					
E360dn	72M60BK	11					
E360dn	72M607F	11					
E360dn	72M6062	11					
E360dn	72M60D1	11					
E360dn	72M60DH	11					
E360dn	72M60CN	11					
E360dn	72M6091	11					
E360dn	72M60F0	11					
E360dn	72M608B	11					
E360dn	72M608F	11					
E360dn	72M6076	11					
E360dn	72M608P	11					
E360dn	72M608N	11					
E360dn	72M6093	11					
E360dn	72M608Y	11					
E360dn	72M6090	11					
E360dn	72M60DL	11					
E360dn	72M6053	11					
E360dn	72M608T	11	6%		377		377
E360dn	72M608R	11					
E360dn	72M606R	11					
E360dn	72M60D4	11					
E360dn	72M6079	11	7%		402		402
E360dn	72M6043	11					
E360dn	72M607C	11					
E360dn	72M60CZ	11					
E360dn	72M60D5	11					
E360dn	72M6082	11					
E360dn	72M608V	11					
E360dn	72M6073	11					
E360dn	72M60DY	11					
E360dn	72M60D6	11					
E360dn	72M60DX	11	14%		834		834
E360dn	72M60D7	11					
MSS10DN	45147GHH3Y95K	3	3%		468		468
MSS10DN	45147GHH3V3V0	3	8%		1158		1158
MSS10DN	45147GHH3V3V8	3	14%		1907		1907
MSS10DN	45147GHH3V3TN	3	12%		1659		1659
MSS10DN	45147GHH3Y95N	3	11%		1470		1470
MSS10DN	45147GHH3V3VD	3	25%		3566		3566
MSS10DN	45147GHH3V3V3	3	4%		598		598
MSS10DN	45147GHH3Y952	3	8%		1147		1147
MSS10DN	45147GHH3Y953	3	7%		949		949
MSS10DN	45147GHH3Y95H	3	12%		1699		1699
MSS10DN	45147GHH3Y89P	3	16%		2178		2178
MSS10DN	45147GHH3V3V5	3	13%		1799		1799
MSS10DN	45147GHH3V3TM	3	7%		1022		1022
MSS10DN	45147GHH3V3V2	3	9%		1205		1205
MSS10DN	45147GHH3V3R0	3	1%		133		133
MSS10DN	45147GHH3Y95L	3	14%		1971		1971
MSS10DN	45147GHH3V3VG	3	8%		1156		1156
MSS10DN	45147GHH3V3V6	3	26%		3577		3577
MSS10DN	45147GHH3V3TY	3	21%		2969		2969
MSS10DN	45147GHH3Y939	3	4%		566		566
MSS10DN	45147GHH3Y95D	3	24%		3413		3413
MSS10DN	45147GHH3Y95M	3					

<< More data continued on Next Page >>

31R861 - Jan 2020 - Page 3

### Printer Details - Page 2

Model	Serial Number	Age in Years	Utilization	ATS Printer	Avg Mono Pages	Avg Color Pages	Avg Monthly Volume
MSS10DN	45147GHH3Y89W	3	6%		908		908
MSS10DN	45147GHH3Y942	3					
MSS10DN	45147GHH4HN16	2					
MSS10DN	45147GHH3Y95C	3					

MS510DN	45147GHH3V3TV	3	12%		1705	1705
MS510DN	45147GHH3V3TZ	3	21%		2882	2882
MS510DN	45147GHH3V3VB	3	6%		805	805
MS510DN	45147GHH3V3VK	3	13%		1795	1795
MS510DN	45147GHH3V3V1	3	15%		2064	2064
MS510DN	45147GHH3V3V9	3	9%		1319	1319
MS510DN	45147GHH3Y93Y	3				
MS510DN	45147GHH3Y94G	3	5%		663	663
MS510DN	45147GHH3Y946	3	5%		695	695
MS510DN	45147GHH3Y95G	3				
MS510DN	45147GHH3Y95P	3	23%		3199	3199
MS510DN	45147GHH3Y955	3	8%		1134	1134
MS510DN	45147GHH3Y957	3				
MS510DN	45147GHH3XDR6	3				
MS510DN	45147GHH4HN0T	2				
MS510DN	45147GHH4HN13	2				
MS510DN	45147GHH4K67D	2				
MS510DN	45147GHH4K679	2	4%		571	571
MS621DN	460090200LVNF	1				
MS621DN	460090530NF7P	1				
MS621DN	460090730NMGY	1				
MS810	40636C6602G2G	3	1%		835	835
MS810	45146PHH3MM1H	3				
MS810de	40634C6600TRX	5	42%	Yes	8440	8440
MS822DE	4064903014PR6	1				
MS822DE	4064903014PR8	1				
MX711DHE	74636C660103W	3	15%	Yes	3824	3824
MX711dhe	74634C6601804	5	2%	Yes	598	598
MX722ADHE	7464832020CM1	1				
T650n	7934WF4	11				
T650n	7934WDH	11	2%	Yes	339	339
T650n	7934WB9	11		Yes		
T650n	793093G	11		Yes		
T650n	7934W9F	11				
X544n	94F8PGK	7				
X656de	793F27L	11	10%	Yes	2874	2874
0	0	0				
0	0	0				
0	0	0				
0	0	0				
0	0	0				
0	0	0				
0	0	0				
0	0	0				

<< End of Data >>

For more information regarding this snapshot, please contact your Lexmark team

### Lexmark Team

Title	Name	E-Mail	Phone
Client Executive	Mindy Maher	<a href="mailto:mmaher@lexmark.com">mmaher@lexmark.com</a>	212-880-2837
Site Operations	Mark Ennis	<a href="mailto:mennis@lexmark.com">mennis@lexmark.com</a>	908-210-3030
Systems Engineer	TBD	TBD	TBD

### CDW Team

CDW Sales Department – 800-705-4239

Title	Name	E-Mail	Phone
Sales Manager	John Skidmore	<a href="mailto:john.skidmore@cdwg.com">john.skidmore@cdwg.com</a>	(866) 687-3187
Sales Operations	Jon Gray	<a href="mailto:jongray@cdw.com">jongray@cdw.com</a>	(203) 851-7133
		<a href="mailto:NYCDOE@cdwg.com">NYCDOE@cdwg.com</a>	