

Lexmark Managed Print Services Monthly Report: Jan 2020

75R373 - P.S. R373, 91 Henderson Avenue, Staten Island, NY 10301-2107

Please find enclosed a snap shot of your school's printer environment. The printer breakdown and data encompasses only the printers we can see on your network. You may have additional printers that are locally connected (e.g. USB attached), but those are not included in this breakdown.

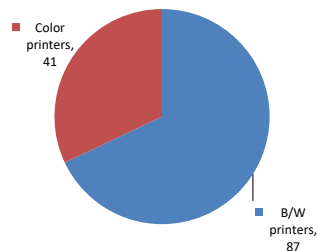
Chart 1 – School Printer Breakdown

This provides your school's enrollment, along with the number of printers, including the distribution between B/W and color printers.

P.S. R373

Enrollment	598
B/W printers	87
Color printers	41
Total printers	128

Color/Mono Device Breakdown



From the list provided on page 3 are all of your printers represented? If not, how many are missing
Providing Lexmark the asset data that is missing will allow us to give you a more accurate picture of your printer environment.

Do you know how many printers you have in your main office, compared to the number of people who sit in the main office?
Reducing the number of devices and using the most efficient models in the right locations can help your school save money.

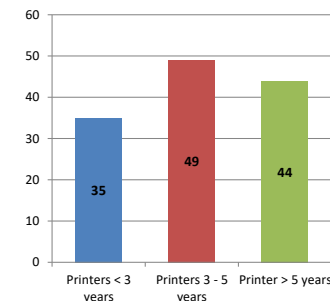
Chart 2 – Printer Age Statistics

Here we show the average age of your printers and show the distribution among 3 age categories; under 3 years old, 3-5 years old and over 5 years old.

Printer Age Statistics

Average Age (years)	4
Printers < 3 years	35
Printers 3 - 5 years	49
Printer > 5 years	44

Printer Age Statistics



The age of your printer fleet plays a large role in your annual printer maintenance and toner cost. The DOE only supports printers 6 years and younger.

Once the warranty expires and the age of your device exceeds 6 years, maintenance and repairs become very costly.

New printers have higher toner yields than older printers, resulting in lower cost per page which saves money.

Newer printers are Energy Star compliant and have advanced eco settings which help reduce energy usage and saves money.

Glossary

B/W - Black and White Printing Only

Color - Color or Black and White Printing

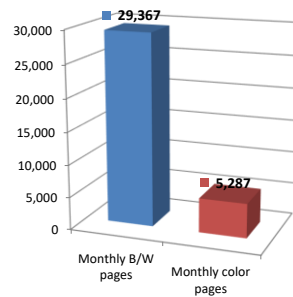
Duplex - Printing on both sides of the paper.

Simplex - Single Sided Printing

Chart 3 – Volume of Pages Printed

This provides your printed page volumes for the previous month for both B/W and color print jobs. In addition, a utilization percentage is calculated by comparing your print volume for each printer to the maximum monthly volume capacity for that printer model.

Color/Mono Pages Printed



Volume of pages printed

Monthly B/W pages	29,367
Monthly color pages	5,287
Total monthly pages	34,654
Color page %	15%
Utilization %	1%

[Do you know if all of your printers are being used and how much?](#)

Knowing where volumes are created helps identify areas for consolidation and helps you select the most efficient printers for replacement.

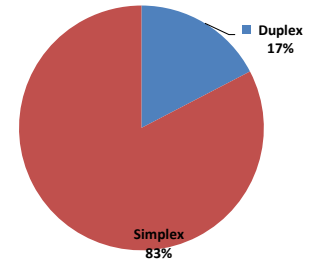
[Are you printing a large amount of color volume?](#)

Controlling color volume, which typically costs more than black and white, can help your school save money.

Chart 4 – Duplex Breakdown

This section shows the percentage of duplexed (double-sided) pages printed along with your duplex opportunity. Duplex opportunity is the total number of pages that could be printed duplex and does not include single page documents. Keep in mind, only the newer printers report duplex statistics. The duplex opportunity shows the prior month's print volume, from the printers with duplex statistics, that could have been duplexed.

Duplex Vs. Simplex



Duplex breakdown

Duplex opportunity	7,478
Duplex	17%

[Did you know that your printers are able to print on both back and front of the page?](#)

Increasing your school's use of double sided printing helps reduce your environmental impact and will help your school save money.

[The average duplex rate for the NYC DOE is 14%](#)

A modest improvement in duplex of 10% would reduce the carbon footprint by over 435,000 pounds of CO₂ per year, and save the DOE over \$78,000 in paper costs annually.

[Lexmark printers 6 years and younger all have duplex capability. The following duplex initiatives can reduce paper consumption and save money:](#)

Setting duplex as your default setting on your printer

Educating end users about the benefit of duplex printing.

[For more information on how the DOE is focused on Sustainability check:](#)

<http://schools.nyc.gov/community/facilities/sustainability/about/>

Actions you can take to Save your School Money

- Use highest yield toner whenever possible to lower the cost per page.
- Consider replacing printers over 6 years old to optimize eco-friendly printer environment.
- Duplex multiple page documents when possible to reduce paper usage.

Printer details

Model	Serial Number	Age in Years	Utilization	ATS Printer	Avg Mono Pages	Avg Color Pages	Avg Monthly Volume
C534n	9418KXR	12					

C544dn	9458VTG	8					
C544dn	9458VRX	8	16%	52	437	489	
C544dn	98147VZ	10					
C544dn	98147W2	10					
C544dn	9458VT3	8					
C544dn	9458VRF	8	24%	193	520	713	
CS510DE	502734946FZ0X	3	1%	36	47	83	
CS510de	5027139451PZX	7		Yes			
CS510de	5027089461CDY	7	3%	24	155	179	
CS510de	5027089461CF3	7	13%	248	630	878	
CS510de	5027089461CDW	7	5%	77	253	330	
CS510de	5027139451R03	7					
CS510de	5027089461CDT	7					
CS510de	5027139451PXF	7					
CS510de	5027089464XVR	6	2%	144	14	158	
CS510de	5027089461CDD	7	0%		2	2	
CS510DE	502710945VK58	1	4%	128	125	253	
CS510de	5027089461CFD	7					
CS510de	502704946D1PY	4	10%	148	558	706	
CS510de	5027089461CFG	7					
CS510de	5027089461CFN	7	14%	179	798	977	
CS510de	5027459450BGK	7	5%	69	295	364	
CS510de	5027459450BVF	7	8%	62	486	548	
CS510de	502726946BTNB	4					
CS510de	5027089464XVV	6					
CS510DE	502706946HRKB	3					
CS510DE	502720945M7HX	2					
CS510DE	502736946G3N1	2					
CS622DE	5029818040550	1					
CS622DE	5029845040Y35	1	2%	91	121	212	
CS622DE	5029903041BMC	1					
CS622DE	5029903041BM8	1	8%	64	688	752	
CS622DE	5029908041L9F	1					
CS622DE	5029903041BN3	0					
CS622DE	5029905041HGB	0					
CS725DE	50289200F3YYL	0					
CX510de	7527229464WGP	5					
CX510de	7527229464WH3	5					
CX510de	7527229464WGV	5					
CX510DE	752741946FT39	3	8%	424	158	582	
E250dn	72B44DZ	14					
E250dn	72B66ND	14					
MSS10DN	45146PHH37TT1	3					
MSS10DN	45146PHH37T7M	3	8%	1118		1118	
MSS10DN	45146PHH37TRY	3	1%	147		147	
MSS10DN	45146PHH37T7R	3					
MSS10DN	45146PHH37TT0	3	2%	303		303	
MSS10DN	45146PHH37T7Y	3					
MSS10dn	451457HH2H0LB	4					
MSS10dn	451444HH1G2WY	4					
MSS10dn	45145PHH2HB69	4	1%	192		192	
MSS10DN	45146PHH37TRR	3	2%	343		343	
MSS10DN	45147GHH4H2D3	1					
MSS10dn	451420HH045TN	7					
MSS10dn	451444HH1G2X0	5	10%	1338		1338	
MSS10dn	451444HH1G2WR	5	7%	1042		1042	
MSS10DN	45146PHH39KK8	3	3%	458		458	
MSS10dn	451420HH04641	7					
MSS10dn	451444HH1G2WH	5	7%	950		950	
MSS10dn	451444HH1G2XG	4	4%	498		498	
MSS10DN	45147GHH3RXKF	3					
MSS10dn	451433HH10W0N	6					
MSS10DN	45146PHH37TT3	3	6%	810		810	
MSS10dn	451420HH04612	7	0%	2		2	

<< More data continued on Next Page >>

75R373 - Jan 2020 - Page 3

Printer Details - Page 2

Model	Serial Number	Age in Years	Utilization	ATS Printer	Avg Mono Pages	Avg Color Pages	Avg Monthly Volume
MSS10DN	45146PHH37T7P	3	2%		349		349
MSS10dn	45145PHH2VXZ7	4	6%		812		812
MSS10dn	451444HH1G2X6	4					
MSS10dn	451457HH2H0LN	4					

MS510dn	451444HH1G2XF	4			
MS510DN	45146PHH37T7L	3			
MS510DN	45146PHH37TRT	3			
MS510DN	45146PHH37T7Z	3	3%	469	469
MS510DN	45146PHH37TRM	3	9%	1222	1222
MS510DN	45146PHH37T56	3			
MS510DN	45146PHH37TT2	3			
MS510DN	45146PHH37T83	3	2%	241	241
MS510DN	45147GHH3RXBD	3	6%	772	772
MS510DN	45147GHH48C6W	2			
MS510DN	45147GHH4C98L	2			
MS510DN	45147GHH4H1WP	1	6%	774	774
MS510DN	45147GHH4H2CW	1			
MS510DN	45147GHH4H2C0	1			
MS510DN	45147GHH4H2DC	1			
MS510DN	45147GHH4H2DF	1	6%	821	821
MS510DN	45147GHH4H2DM	1	3%	475	475
MS510DN	45147GHH4H2DR	1			
MS621DN	460083700D8N8	1			
MS621DN	460083600CZ5R	1			
MS621DN	460085100L6MB	1			
MS621DN	460090530NFM8	1			
MS621DN	460090730NMG4	0			
MS621DN	460090730NN0B	0			
MS621DN	46009333107LF	0			
MS621DN	4600949317C6Y	0			
MS621DN	4600949317C6M	0			
MS810	45146PHH37T89	3			
MS810	45146PHH37TTB	3			
MS810	45146PHH37TT7	3	0%	51	51
MS810	45146PHH37TRP	3	1%	698	698
MS810	45146PHH37TRN	3	1%	897	897
MS810	45146PHH37T80	3			
MS810	502710946D9NN	4	0%	57	57
MS810	45146PHH37T7D	3	1%	792	792
MS810	502734946FZ0P	3	0%	178	178
MS810	502738945PW8K	2	0%	214	214
MS810	502720946DT4D	4			
MS810	45146PHH37TRW	3	1%	487	487
MS810	451444HH1G2WMM	5			
MS810	45146PHH37T7X	3	0%	1	1
MS810	45146PHH37TRH	3	0%	345	345
MS810	45146PHH37TRX	3			

<< Data is Truncated >>

For more information regarding this snapshot, please contact your Lexmark team

Lexmark Team

Title	Name	E-Mail	Phone
Client Executive	Mindy Maher	mmaher@lexmark.com	212-880-2837
Site Operations	Mark Ennis	mennis@lexmark.com	908-210-3030
Systems Engineer	TBD	TBD	TBD

CDW Team CDW Sales Department – 800-705-4239

Title	Name	E-Mail	Phone
Sales Manager	John Skidmore	john.skidmore@cdwg.com	(866) 687-3187
Sales Operations	Jon Gray	jongray@cdw.com	(203) 851-7133
		NYCDOE@cdwg.com	